



DRIVELINE COMPONENTS CATALOG TUBE SHAFTS



J300P-7
November 2003

Supersedes
Section 7, Dated
December 2002



People Finding A Better Way[®]

Determine which type of tube shaft you have

- Slip tube shaft (pages 4-7)
- Midship tube shaft, style used with a companion flange or end yoke (pages 8-11)
- Midship tube shaft, used with outboard slip yokes (pages 12-14)

To identify a Slip Tube Shaft:

- Determine spline O.D. and number of teeth
- Determine the size and wall thickness of the tube it fits
- Determine weld to end of spline dimension
Check any other dimensions listed
- Determine part number, check for footnotes

①	Fits Tube		K End of Spline to Weld	L Length of Spline	R End of Spline to Radius	Spicer Part Number
	Diameter	Wall Thickness				
	1.0620-16 Spline					
②	1.2500	.0950	4.2810	1.7500	4.0000	1-42-31
	1.2500	.0950	5.3440	2.0000	4.9380	1-42-101 <i>Spline not Glidcoated</i>

To identify a Companion flange or End Yoke Style Midship Tube Shaft:

- Determine bearing diameter
- Determine spline O.D. and number of teeth
- Determine the size and wall thickness of the tube it fits
- Determine end of spline to bearing shoulder dimension
- Determine weld to end of spline dimension
- Make sure thread type and size match part being identified
- Make sure style of shaft matches part being identified
Check any other dimensions listed
- Determine part number, check for footnotes

①	C Shaft Support Bearing Diameter Max./Min.	Fits Tube		Y End of Spline to Bearing Shoulder	K End of Spline to Point of Weld	S t y l e	L Length of Spline	Thread Size	B Shoulder Diameter	G Length of Shoulder	Midship Tube Shaft Part Number
		Tube Dia.	Wall Thickness								
②	1.1815 Bearing Diameter										
	1.12500-26 Involute Spline										
	1.1815/1.1810	2.5000	.0650	1.9060	3.4060	2	1.3750	.625-18	1.1560	.4380	2-53-1321
	1.1815/1.1810	2.5000	.0650	2.0310	3.4060	2	1.3750	.625-18	1.6900	.7810	2-53-1011
③	1.1815/1.1810	2.5000	.0830	1.4690	3.4060	2	1.3750	.625-18	1.4690	.3930	2-54-351X <i>Includes slinger</i>
	1.1815/1.1810	2.5000	.0830	1.4690	3.4060	2	1.3750	.625-18	1.4690	.3990	2-54-361
	1.1815/1.1810	2.5000	.0830	1.9060	3.4060	2	1.3750	.625-18	1.1810	.6650	2-53-1351
	1.1815/1.1810	2.5000	.0830	2.0310	3.4060	2	1.3590	.625-18	1.5000	.7500	2-53-1051
	1.1815/1.1810	2.5000	.0830	2.0310	3.4060	2	1.3440	.625-18	1.1880	1.1650	2-53-1331
	1.1815/1.1810	2.5000	.0830	2.0310	3.4060	2	1.3750	.625-18	1.4530	.3990	2-5-371
	1.1815/1.1810	3.0000	.0650	2.1250	3.4100	2	1.3440	.625-18	1.6560	.7030	2-53-1161
	1.1815/1.1810	3.0000	.0650	2.3400	3.4060	2	1.5680	.625-18	1.3440	—	2-53-1571



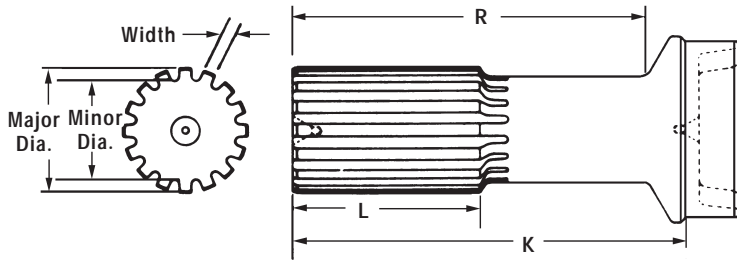
To identify an Outboard Slip Yoke Style Midship Tube Shaft:

1. Determine bearing diameter
2. Determine spline O.D. and number of teeth
3. Determine the size and wall thickness of the tube it fits
4. Determine end of spline to bearing shoulder dimension
5. Determine weld to end of spline dimension
6. Make sure style of shaft matches part being identified
Check any other dimensions listed
7. Determine part number, check for footnotes

C Shaft Support Bearing Diameter Max./Min.	Fits Tube		Y End of Spline to Bearing Shoulder	K End of Spline to Point of Weld	S t y l e	L Length of Spline	B Shoulder Diameter	G Length of Shoulder	Midship Tube Shaft Part Number
	Tube Diameter	Wall Thickness							
1.3784 Bearing Diameter 1.3750-15 Based On 16 Spline									
1.3784/1.3779	2.5000	.0830	7.4060	8.4690	2	2.5000	1.6880	.8120	2-53-921
1.3784/1.3779	2.5000	.0830	7.8120	8.8750	2	2.5000	1.6880	.8120	2-53-681
1.3784/1.3779	3.0000	.0650	7.8120	8.8750	2	2.5000	1.6880	.8120	2-53-691
1.3784/1.3779	3.0000	.0830	6.9690	8.7500	2	3.0000	1.6880	.1600	2-53-1371
1.3784/1.3779	3.0000	.0830	7.9690	9.0310	2	2.5000	1.6880	.8120	2-53-711



SLIP TUBE SHAFTS



Note: Spline is Glidecote except where footnoted.

Note: Butt Diameter should be .007" to .010" larger than the Inside Diameter of the tube.

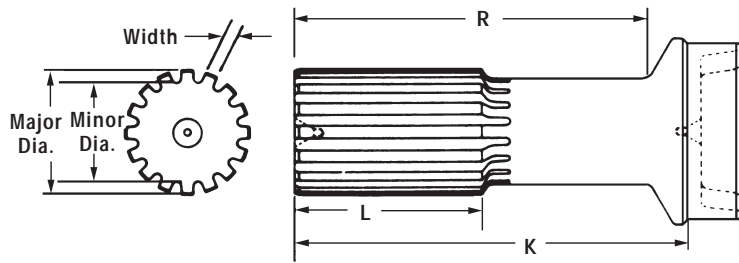
Fits Tube		K End of Spline to Weld	L Length of Spline	R End of Spline to Radius	Spicer Part Number
Diameter	Wall Thickness				
1.0620-16 Spline					
1.2500	.0950	4.2810	1.7500	4.0000	1-42-31
1.2500	.0950	5.3440	2.0000	4.9380	1-42-101
<i>Spline not Glidecoted</i>					
1.1250-26 Involute Spline					
1.2500	.0950	4.4380	2.0000	4.1880	10-40-11
2.5000	.0650	7.3200	1.5830	6.6650	27-40-31
<i>Spline not Glidecoted</i>					
1.2500-15 Based On 16 Spline					
1.2500	.0950	7.9380	2.0000	7.6560	2-42-181
1.7500	.0650	4.4690	2.0000	3.9380	2-40-1071
1.2500-16 Spline					
1.2500	.1200	6.1250	1.9060	5.3750	2-40-1771
1.7500	.0650	4.4690	2.0000	3.9380	2-40-971
1.7500	.0950	5.9690	2.0000	5.4380	2-40-2241
2.0000	.0650	4.8750	2.0000	4.2810	2-40-1011
2.0000	.0830	6.0000	2.0000	5.4060	2-40-1741
2.0000	.1200	6.0000	2.0000	5.4060	2-40-2381
2.5000	.0650	6.1250	2.0000	5.4060	2-40-2211
2.5000	.0650	6.1250	3.6250	5.4060	2-40-2481
2.5000	.0650	7.7500	2.5000	7.0310	2-40-2301
1.3750-15 Based On 16 Spline					
2.5000	.0950	7.5310	3.6250	6.8120	2-40-2791
1.3750-16 Spline					
1.2500	.0950	5.0900	2.7500	4.6900	2-42-581
1.2500	.1880	8.1250	3.6250	7.6400	2-40-2781
1.7500	.0950	7.7500	3.6250	7.3120	2-40-2681
2.0000	.0830	5.1880	2.2500	4.6250	2-40-1031
2.0000	.0830	6.1880	2.2500	5.6250	2-40-2451
2.0000	.0830	6.5620	2.1250	6.0000	2-40-1841
2.0000	.1200	5.1880	2.2500	4.6250	2-40-2021
2.0000	.1200	6.1880	2.2500	5.6250	2-40-1701
2.0000	.1200	6.1880	3.6250	5.6250	2-40-2441
2.0000	.1200	6.1900	2.2500	5.6200	2-40-2851
<i>.310 x 30 degree chamfer on spline end</i>					
2.0000	.1200	6.7150	3.6200	6.1400	2-40-2831
2.0000	.1200	7.9060	3.6250	7.3280	2-40-2661
2.5000	.0650	5.3440	2.2500	4.6250	2-40-1041
2.5000	.0650	6.3440	2.2500	5.6250	2-40-1811
2.5000	.0650	6.8440	2.2500	6.1250	2-40-1291
2.5000	.0650	8.0000	3.6250	7.3120	2-40-2671
2.5000	.0830	10.0000	3.0000	9.3750	2-40-2611
2.5000	.0830	5.3440	2.2500	4.6250	2-40-1131
2.5000	.0830	6.3440	2.2500	5.6250	2-40-1711
2.5000	.0830	7.1000	3.1880	6.3750	2-40-2801
2.5000	.0830	7.3750	3.0000	6.6560	2-40-2871



Fits Tube		K	L	R	Spicer Part Number
Diameter	Wall Thickness	End of Spline to Weld	Length of Spline	End of Spline to Radius	
1.3750-16 Spline (Continued)					
2.5000	.0830	7.5310	2.2500	6.8120	2-40-1851
2.5000	.0830	7.5310	3.6250	6.8130	2-40-2461
2.5000	.0830	7.5310	2.2500	6.8120	2-40-2631
					<i>Special center in spline end</i>
2.5000	.0830	8.0000	3.0000	7.1600	2-40-2941
3.0000	.0650	5.6250	2.2500	4.8120	2-40-1211
3.0000	.0650	6.4380	2.2500	5.6250	2-40-1221
3.0000	.0650	7.6250	2.2500	6.8120	2-40-2051
3.0000	.0830	6.0500	2.2500	5.6250	2-40-2811
3.0000	.0830	6.4380	2.2500	5.6250	2-40-1521
3.0000	.0830	7.6250	2.2500	6.8120	2-40-2231
3.0000	.0830	7.6250	3.0000	6.8120	2-40-2691
3.0000	.0830	8.6410	6.7810	7.8280	2-40-1871
3.5000	.0650	6.6250	2.2500	5.6250	2-40-1671
3.5000	.0650	7.8750	3.6250	6.8750	2-40-2761
3.5000	.0830	6.6250	2.2500	5.6250	2-40-1531
3.5000	.0830	7.9060	2.2500	6.9060	2-40-2041
3.5000	.0830	7.9060	3.6250	6.9060	2-40-2531
3.5000	.0830	8.9690	6.9060	7.9690	2-40-2091
4.0000	.0830	6.7190	2.5000	5.5620	2-40-1921
1.3750-31 Based On 32 Spline					
2.0000	.1200	6.3120	3.0000	5.7500	2-40-2421
2.0000	.1200	7.4380	3.5310	6.8750	2-40-2361
					<i>Spline not Gliddecoted</i>
2.5000	.0830	6.3440	2.2500	5.6250	2-40-2501
					<i>Spline not Gliddecoted</i>
1.4370-21 Based On 22 Spline					
3.5000	.0830	8.2810	3.5000	7.3440	3-40-2241
1.5000-15 Based On 16 Spline					
2.5000	.1560	7.8120	2.5000	7.0940	3-42-451
1.5000-16 Spline					
2.5000	.0830	5.6250	2.5000	4.9690	3-40-1471
3.0000	.0830	5.9380	2.5000	5.1250	3-40-1101
3.0000	.0830	6.2810	3.0000	5.4690	3-40-1511
3.0000	.0830	7.2500	2.5000	6.4380	3-40-1611
3.0000	.0830	7.4060	3.0000	6.5940	3-40-1421
3.0000	.0830	8.2500	3.0000	7.4060	3-40-1911
3.5000	.0650	6.5620	3.0000	5.6250	3-40-1521
3.5000	.0650	7.3440	2.5000	6.4060	3-40-481
3.5000	.0830	5.3750	2.0000	4.4380	3-40-2071
3.5000	.0830	6.5620	3.0000	5.6250	3-40-1531
3.5000	.0830	6.8440	2.5000	5.8280	3-40-1431
3.5000	.0830	7.3440	2.5000	6.4060	3-40-1621
3.5000	.0830	7.5310	3.0000	6.5940	3-40-1491
4.0000	.0830	7.8750	3.0000	6.6880	3-40-1501
4.5000	.0950	7.6880	2.5000	6.4380	3-40-1281
1.5350-23 Based On 24 Spline					
3.5000	.0830	8.0000	3.0000	7.0600	3-40-2171
1.5620-16 Spline					
3.5000	.0830	10.7500	3.0000	9.8120	3-40-1411
3.5000	.0830	6.7500	3.0000	5.8120	3-40-1571
3.5000	.0830	8.7500	3.0000	7.8120	3-40-1871
4.0000	.0830	8.9380	3.0000	7.8120	3-40-1551
1.5620-23 Based On 24 Spline					
3.5000	.0830	8.0000	3.0000	7.0800	3-40-2091



SLIP TUBE SHAFTS



Note: Spline is Glidecote except where footnoted.

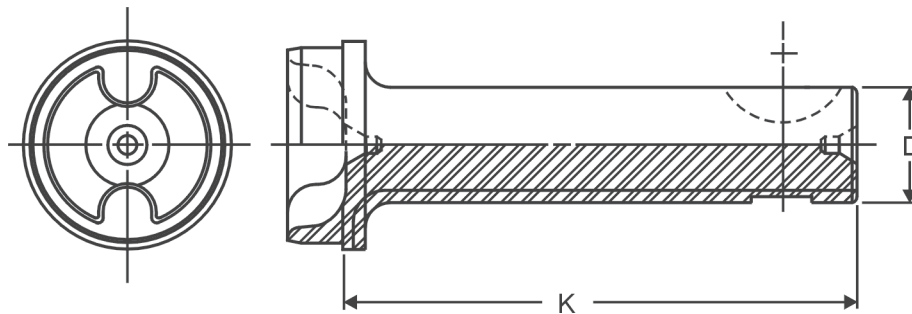
Note: Butt Diameter should be .007" to .010" larger than the Inside Diameter of the tube.

Fits Tube		K	L	R	Spicer Part Number
Diameter	Wall Thickness	End of Spline to Weld	Length of Spline	End of Spline to Radius	
1.5630-23 Based On 24 Spline					
3.5000	.0830	7.4000	3.5000	5.8110	55-40-51
3.5000	.0830	8.7010	3.5000	7.0830	55-40-71
4.0000	.0830	7.4000	3.5000	5.9800	55-40-11
4.0000	.0830	8.7000	3.5000	7.1180	55-40-31
1.7500-16 Spline					
3.5000	.0950	12.0000	5.0000	11.0300	4-40-1031
3.5000	.0950	20.7500	3.0000	19.8700	4-40-1061
3.5000	.0950	6.7810	3.0000	5.8120	4-40-761
3.5000	.0950	7.9380	3.0000	6.9690	4-40-741
3.5000	.0950	9.2190	3.0000	8.2500	4-40-721
3.5000	.1560	6.7810	3.0000	5.8120	4-40-951
4.0000	.0830	6.9380	3.0000	5.8120	4-40-781
4.0000	.1340	6.9380	3.0000	5.8120	4-40-991
1.7520-26 Based On 27 Spline					
3.5000	.0950	8.7500	3.5000	6.9500	70-40-71
4.0000	.0830	7.9530	3.5000	6.5310	70-40-11
4.0000	.0830	8.7510	3.5000	7.3300	70-40-31
1.8120-28 Involute Spline					
3.5000	.0950	9.8120	4.0000	8.9060	4-40-961
1.9370-29 Based On 30 Spline					
4.0000	.0950	8.7990	4.0000	6.8500	100-40-11
<i>Refer to bulletin JOI-TEC-41 for important spline data</i>					
4.0000	.0950	9.5900	4.0000	7.8310	100-40-31
<i>Refer to bulletin JOI-TEC-41 for important spline data</i>					
1.9370-30 Involute Spline					
2.7500	.1590	7.1850	2.9530	6.1610	6C-40-11
<i>Uses tube and seal assy no. 212114-1X</i>					
4.0000	.0950	8.2810	4.0000	7.1880	90-40-21
4.0000	.1340	10.0940	4.0000	9.0000	90-40-11
4.0000	.1340	8.2810	4.0000	7.1900	90-40-41
2.0000-15 Based On 16 Spline					
3.5000	.0950	8.5620	3.5000	7.6560	5-40-491
2.0000-16 Spline					
3.5000	.0950	7.5620	3.5000	6.6560	5-40-451
3.5000	.0950	8.5620	3.5000	7.6250	5-40-471
3.5000	.0950	9.5620	3.5000	8.6560	5-40-501
3.5000	.1340	10.1880	3.5000	9.2810	5-40-1041
3.5000	.1340	7.5620	3.5000	6.6560	5-40-1191
3.5000	.1340	7.8440	4.0000	6.9380	4-40-891
3.5000	.1340	8.5620	3.5000	7.6560	5-40-1101
3.5000	.1340	8.5620	3.5000	7.6560	5-40-1151
3.5000	.1340	9.6880	3.5000	8.7810	5-40-1011
3.5000	.1560	8.5620	3.5000	7.6560	5-40-1121



Fits Tube		K	L	R	Spicer Part Number
Diameter	Wall Thickness	End of Spline to Weld	Length of Spline	End of Spline to Radius	
2.0000-16 Spline (Continued)					
3.5000	.1560	9.5620	3.5000	8.6880	5-40-1031
3.5500	.2070	7.5620	3.5000	6.6560	5-40-1241
4.0000	.1340	9.8440	3.5000	8.7810	5-40-1051
2.5000-10 Spline					
3.5000	.1560	10.3440	4.0000	9.5000	6-40-61
3.5000	.1560	8.3440	4.0000	7.5000	6-40-51
2.5000-15 Based On 16 Spline					
4.0000	.1340	10.5620	4.0000	9.5620	6-40-831
2.5000-16 Spline					
3.5000	.1560	9.2500	4.0000	8.3750	6-40-741
3.5500	.2070	10.3440	4.0000	9.5000	6-40-701
4.0000	.1340	10.5620	4.0000	9.5620	6-40-521
4.0000	.1340	10.5620	3.5000	9.5620	6-40-891
4.0000	.1340	13.5000	4.0000	12.5000	6-40-821
4.0000	.1340	8.4380	4.0000	7.4380	6-40-711
4.0000	.1340	9.2500	4.0000	8.2500	6-40-541
4.5000	.1340	10.6560	4.0000	9.4690	6-40-621
4.5000	.1340	9.5000	4.0000	8.3120	6-40-631
2.6720-18 Involute Spline					
3.5000	.1340	3.5940	1.5000	3.2810	5-40-1181 <i>Spline not Glidecoted</i>
3.5500	.2070	3.5940	2.0000	3.2810	5-40-1341 <i>Spline not Glidecoted</i>
3.0000-16 Spline					
3.5500	.2070	10.8120	4.5000	10.0000	6.5-40-141
4.5000	.1340	11.2500	4.5000	10.0310	6.5-40-191
4.5000	.1340	11.2500	5.5000	10.0310	6.5-40-251
4.5000	.1340	9.4690	4.5000	8.4060	6.5-40-201
4.5000	.2590	11.5310	4.5000	10.2190	8-40-101
4.5000	.2590	9.9060	4.5000	8.5940	8-40-91
3.2500-18 Involute Spline					
3.5000	.1560	4.2500	2.0000	3.9060	6-40-181 <i>Spline not Glidecoted</i>

ROUND TUBE SHAFTS



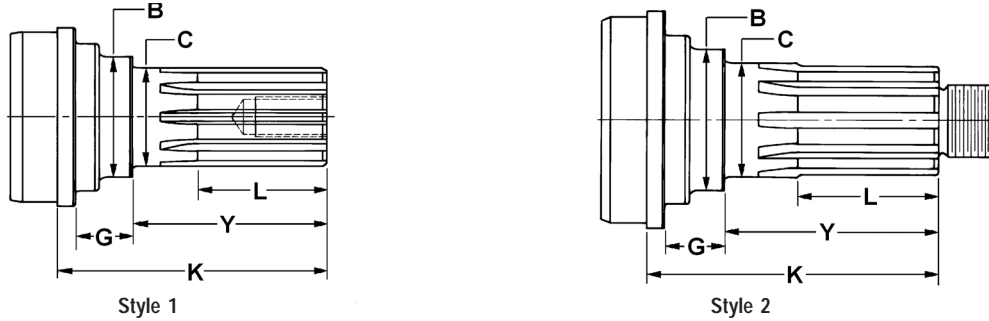
D	K	Fits Tube		R	Spicer Assembly Number
Diameter	End of Shaft to Weld	Diameter	Wall Thickness	Butt Diameter	
.9990 / .9990					
.9990	4.3100	1.7500	.0650	1.6200	10-53-18X <i>Key Included</i>



Important: See Safety Information in General Information Section (J300P-GI)

SPLINED MIDSHIP TUBE SHAFTS

Companion Flange or End Yoke Design



Note: Butt Diameter should be .007" to .010" larger than Inside Diameter of the tube.

C Shaft Support Bearing Diameter Max./Min.	Fits Tube		Y End of Spline to Bearing Shoulder	K End of Spline to Point of Weld	S t y l e	L Length of Spline	Thread Size	B Shoulder Diameter	G Length of Shoulder	Midship Tube Shaft Part Number
	Tube Dia.	Wall Thick- ness								
1.1815 Bearing Diameter										
1.1250-26 Involute Spline										
1.1815/1.1810	2.5000	.0650	1.9060	3.4060	2	1.3750	.625-18	1.1560	.4380	2-53-1321
1.1815/1.1810	2.5000	.0650	2.0310	3.4060	2	1.3750	.625-18	1.6900	.7810	2-53-1011
1.1815/1.1810	2.5000	.0830	1.4690	3.4060	2	1.3750	.625-18	1.4690	.3930	2-54-351X <i>Includes slinger</i>
1.1815/1.1810	2.5000	.0830	1.4690	3.4060	2	1.3750	.625-18	1.4690	.3930	2-54-361
1.1815/1.1810	2.5000	.0830	1.9060	3.4060	2	1.3750	.625-18	1.1810	.6650	2-53-1351
1.1815/1.1810	2.5000	.0830	2.0310	3.4060	2	1.3590	.625-18	1.5000	.7500	2-53-1051
1.1815/1.1810	2.5000	.0830	2.0310	3.4060	2	1.3440	.625-18	1.1880	1.1650	2-53-1331
1.1815/1.1810	2.5000	.0830	2.0310	3.4060	2	1.3750	.625-18	1.4530	.3990	2-54-371
1.1815/1.1810	3.0000	.0650	2.1250	3.4100	2	1.3440	.625-18	1.6560	.7030	2-53-1161
1.1815/1.1810	3.0000	.0650	2.3400	3.4060	2	1.5680	.625-18	1.3440	—	2-53-1571
1.1815/1.1810	3.0000	.0650	2.4380	4.3000	2	1.8750	.625-18	1.5000	1.8590	2-53-1311
1.1815/1.1810	3.0000	.0830	2.0310	3.4060	2	1.3440	.625-18	1.4530	.4000	2-53-1071
1.2602 Bearing Diameter										
1.1250-26 Involute Spline										
1.2602/1.2597	2.0000	.0830	2.2800	3.2970	2	1.4690	.625-18	1.6880	.7030	2-53-901
1.3784 Bearing Diameter										
1.2500-29 Involute Spline										
1.3784/1.3779	3.0000	.0830	2.4380	2.9400	2	1.5300	1.000-20	2.0620	.5000	2-53-1411
1.3784 Bearing Diameter										
1.3750-10 Spline										
1.3784/1.3779	2.5000	.0650	2.6880	3.7500	2	1.7810	1.000-20	1.6880	.8120	2-53-1211
1.3784/1.3779	2.5000	.0830	2.6880	3.7500	2	1.7810	1.000-20	1.6880	.8120	2-53-1191
1.3784/1.3779	3.0000	.0830	2.2910	3.9690	1	2.0000	.500-20	1.6880	1.0620	3-53-191
1.3784/1.3779	3.0000	.0830	2.6560	4.0000	2	1.6880	1.000-20	1.7190	1.1250	3-54-611
1.3784/1.3779	3.0000	.0830	2.6880	3.7500	2	1.7810	1.000-20	1.6880	.8120	2-53-1151
1.3784 Bearing Diameter										
1.3750-15 Based on 16 Spline										
1.3784/1.3779	3.0000	.0830	8.4800	9.5400	2	3.5000		1.6900	.4700	2-53-1511
1.5748 Bearing Diameter										
1.2500-29 Involute Spline										
1.5748/1.5743	3.5000	.0830	2.3400	3.4600	1	1.5300	1.000-20	1.8100	.8800	3-53-2541



SPLINED MIDSHIP TUBE SHAFTS

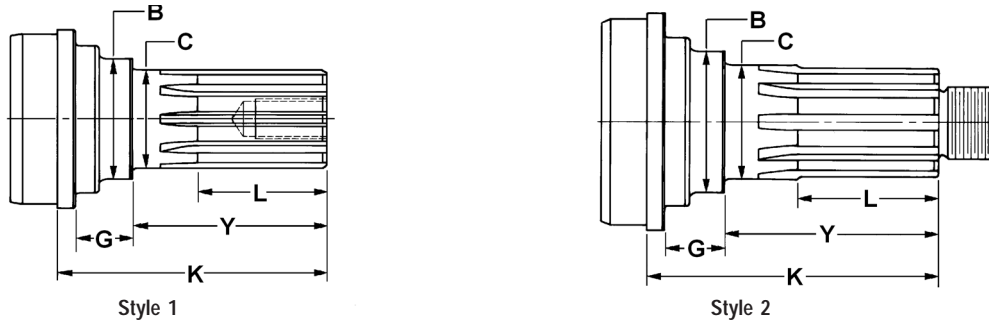
Companion Flange or End Yoke Design

C Shaft Support Bearing Diameter Max./Min.	Fits Tube		Y End of Spline to Bearing Shoulder	K End of Spline to Point of Weld	S t y l e	L Length of Spline	Thread Size	B	G	Midship Tube Shaft Part Number
	Tube Dia.	Wall Thick- ness						Shoulder Diameter	Length of Shoulder	
1.5748 Bearing Diameter										
1.5000-10 Spline										
1.57481.5743	3.0000	.0830	2.6500	3.8750	2	1.9380	1.000-20	1.8120	1.0400	3-53-2361
1.57481.5743	3.0000	.0830	2.7500	3.8750	2	1.8120	1.000-20	1.9380	.8750	3-53-1781
1.57481.5743	3.0000	.0830	2.9380	4.0000	2	1.8440	1.000-20	1.9380	.8120	3-53-1811
1.57481.5743	3.0000	.0830	3.5900	4.6500	2	1.8500		1.3800	.8100	3-53-2321
1.57481.5743	3.0000	.0950	2.7500	3.8750	2	1.9380	1.000-20	1.8120	.8750	3-53-1891
1.57481.5743	3.5000	.0650	3.6250	3.8750	2	1.8120	1.000-20	1.8120	.8750	3-53-2061
1.57481.5743	3.5000	.0830	2.7500	3.8750	2	1.8120	1.000-20	1.9380	.8750	3-53-1791
1.57481.5743	3.5000	.0830	2.7500	3.8750	2	1.8120	1.000-20	1.8120	.5400	3-53-2301
1.57481.5743	3.5000	.0830	2.9690	4.0310	2	2.0000	1.000-20	1.9380	.8120	3-53-1821
1.57481.5743	3.5000	.0830	3.0000	4.4060	2	2.0310	1.000-20	2.0620	1.1560	3-53-421
1.57481.5743	3.5000	.0950	2.9690	4.0310	2	2.0000	1.000-20	1.9380	.8120	4-53-361
1.57481.5743	4.0000	.0830	2.7500	3.8750	2	1.9380	1.000-20	1.8120	1.1250	3-53-1801
1.57481.5743	4.0000	.0830	2.9690	4.0310	2	2.0000	1.000-20	1.9380	.8120	3-53-1831
1.7717 Bearing Diameter										
1.5000-10 Spline										
1.77171.7712	3.5000	.0950	2.9690	4.0620	2	2.0000	1.000-20	2.1900	.8100	4-53-401
1.77171.7712	4.0000	.0830	2.9690	4.0620	2	2.0000	1.000-20	2.1880	.8100	4-53-271
1.7717 Bearing Diameter										
1.7500-10 Spline										
1.77171.7712	3.5000	.0950	3.2500	4.3440	2	2.2810	1.250-18	2.1880	.8120	5-53-111
1.77171.7712	3.5000	.1340	3.1880	4.2810	2	2.0000	1.250-18	2.1880	.8120	5-53-141
1.77171.7712	4.0000	.1340	3.2500	4.3440	2	2.2810	1.250-18	2.1880	.8120	5-53-191
1.7717 Bearing Diameter										
1.7500-34 Involute Spline										
1.7717/1.7712	3.5000	.0950	3.1880	5.0500	2	2.0600	1.250-18	2.1530	.3220	70-53-61
1.7717/1.7712	3.5000	.0950	3.2500	4.2800	2	2.0620	1.250-18	2.1880	.8120	5-53-371
1.7717/1.7712	3.5000	.1340	3.2500	4.3440	2	2.0620	1.250-18	2.1880	.8120	5-53-261
1.7717/1.7712	4.0000	.0950	3.2500	4.3440	2	2.1250	1.250-18	2.1880	.8120	90-53-31
1.7717/1.7712	4.0000	.1340	3.1250	4.2190	2	2.0000	1.250-18	2.1880	.8120	90-53-11
1.7717/1.7712	4.0000	.1340	3.2500	4.3440	2	2.1250	1.250-18	2.1880	.8120	5-53-271
1.9678 Bearing Diameter										
1.9580-10 Spline										
1.96781.9672	4.0000	.1340	3.0000	4.4380	2	1.9380	1.250-18	2.6250	1.0620	6-53-211
1.9685 Bearing Diameter										
1.9500-38 Involute Spline										
1.9685/1.9679	4.3300	.1970	3.8110	5.0551	2	2.6200	M30X6G	2.4409	.8110	140-53-11
1.9685/1.9679	4.5660	.1570	3.3460	4.5910	2	2.1250	M30X6G	2.4410	.8110	140-53-41
1.9685/1.9679	4.5670	.1570	3.8110	5.0550	2	2.6180	M30X6G	2.4410	.8110	140-53-31
1.9685/1.9680	4.5620	.1650	4.0620	5.1560	2	2.8440	1.250-18	2.4380	.8120	6-53-421
<i>Spline has helix on tooth. End yokes will be a tight fit.</i>										
1.9685 Bearing Diameter										
1.9530-38 Involute Spline										
1.9685/1.9680	4.0000	.1340	4.0620	5.1560	2	2.8440	1.250-18	2.4380	.8120	6-53-411
<i>Spline has helix on tooth. End yokes will be a tight fit.</i>										
1.9685 Bearing Diameter										
1.9580-10 Spline										
1.96851.9680	3.5000	.1560	4.0620	5.1560	2	3.0000	1.250-18	2.4380	.8120	6-53-151
1.96851.9680	4.0000	.1340	4.0620	5.1560	2	2.8750	1.250-18	2.4380	.8120	6-53-201
1.96851.9680	4.5000	.1340	4.0620	5.1560	2	2.8750	1.250-18	2.4380	.8120	6-53-241



SPLINED MIDSHIP TUBE SHAFTS

Companion Flange or End Yoke Design



Note: Butt Diameter should be .007" to .010" larger than Inside Diameter of the tube.

C Shaft Support Bearing Diameter Max./Min.	Fits Tube		Y End of Spline to Bearing Shoulder	K End of Spline to Point of Weld	S t y l e	L Length of Spline	Thread Size	B Shoulder Diameter	G Length of Shoulder	Midship Tube Shaft Part Number
	Tube Dia.	Wall Thick- ness								
2.0000 Bearing Diameter										
1.5000-10 Spline										
2.0000/1.9980	3.5000	.0950	5.3750	5.8750	2	1.9380	1.000-20	2.5000	.2300	4-53-351 <i>used with pillow block</i>
2.1653 Bearing Diameter										
2.0000-10 Spline										
2.1653/2.1643	4.0000	.1340	4.2500	6.8440	2	2.8750	1.250-18	2.9380	1.8750	6-53-331
2.1653/2.1643	4.0000	.1340	4.5620	7.8750	2	2.6250	1.250-18	2.5620	2.9380	6-53-261
2.3615 Bearing Diameter										
2.2500-10 Spline										
2.3615/2.3608	4.5000	.2590	3.7500	5.2810	2	2.5620	1.250-18	2.8750	1.1560	8-53-41
2.3615 Bearing Diameter										
2.3600-16 Spline										
2.3615/2.3608	4.0000	.1340	4.6880	7.5620	2	3.0000	1.250-18	3.0000	1.1880	6-53-271
2.3622 Bearing Diameter										
2.3500-16 Spline										
2.3622/2.3617	4.0000	.1340	4.0000	5.3120	2	2.6250	1.250-18	2.8750	.8120	6-53-311
2.3622/2.3617	4.5000	.1340	4.0000	5.3120	2	2.7500	1.250-18	2.8750	1.3120	6.5-53-91
2.3622 Bearing Diameter										
2.3500-46 Involute Spline										
2.3622/2.3617	4.0620	.1650	4.0000	5.3120	2	2.6250	1.250-18	2.8750	.8120	6.3-53-21 <i>Spline has helix on tooth. End yokes will be a tight fit.</i>
2.3622/2.3617	4.3300	.1970	4.0000	5.3110		2.6180	M30X6G	2.8860	.8110	140-53-21
2.3622/2.3617	4.5000	.2590	4.0000	5.3120	2	2.6250	1.250-18	2.8750	.8120	6.5-53-181 <i>Spline has helix on tooth. End yokes will be a tight fit.</i>
2.3622/2.3617	4.5620	.1650	4.0000	5.3120	2	2.6250	1.250-18	2.8750	.8120	6.5-53-171 <i>Spline has helix on tooth. End yokes will be a tight fit.</i>
2.3622/2.3617	5.1970	.2360	3.9800	5.2910	2	2.6180	M30X6G	2.8860	.8120	250-53-11 <i>Spline has helix on tooth. End yokes will be a tight fit.</i>
2.3622 Bearing Diameter										
2.3590-16 Spline										
2.3622/2.3617	4.5000	.2590	4.0000	5.4380	2	2.7500	1.250-18	2.8750	.8120	6.5-53-51
2.3631 Bearing Diameter										
1.9830-31 Involute Spline										
2.3631/2.3626	3.5000	.1340	4.4840	7.4060	2	2.1410	.500-20	2.7740	1.2810	4-53-331
2.4372 Bearing Diameter										
1.9830-31 Involute Spline										
2.4372/2.4363	3.5000	.1340	7.5310	8.5620	1	1.8590	M12x1.750-6H	—	4.7190	4-53-501 <i>Metric thread</i>



SPLINED MIDSHIP TUBE SHAFTS

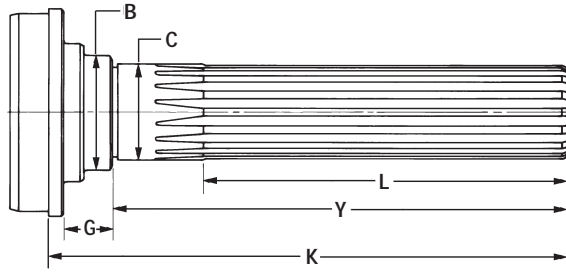
Companion Flange or End Yoke Design

C Shaft Support Bearing Diameter Max./Min.	Fits Tube		Y End of Spline to Bearing Shoulder	K End of Spline to Point of Weld	S t y l e	L Length of Spline	Thread Size	B	G	Midship Tube Shaft Part Number
	Tube Dia.	Wall Thick- ness						Shoulder Diameter	Length of Shoulder	
2.5591 Bearing Diameter										
2.5000-10 Spline										
2.5591/2.5584	4.5000	.1340	6.2810	7.0000	2	2.9380	1.500-18	3.5000	1.5000	6.5-53-111
2.5601 Bearing Diameter										
2.3500-46 Involute Spline										
2.5601/2.5596	3.5000	.1340	6.7030	7.0000	1	2.4690	.500-20	3.1250	1.2340	4-53-301
2.5601/2.5596	4.0000	.1340	4.8200	7.0700	1	2.4800	.500-20	3.1250	1.8900	6-53-481
2.5601/2.5596	4.0950	.1800	5.1560	7.4060	1	2.8120	.500-20	3.1250	1.3120	6-53-351
2.7564 Bearing Diameter										
2.6560-18 Involute Spline										
2.7564/2.7558	4.5000	.2590	4.5620	6.0000	2	2.8750	1.500-18	3.3120	.8120	8-53-61
2.9525 Bearing Diameter										
2.3500-46 Involute Spline										
2.9525/2.9516	4.0000	.1340	7.4800	8.1560	1	2.5310	M12x1.750-6H	2.9510	4.3200	5-53-341 <i>Metric thread</i>

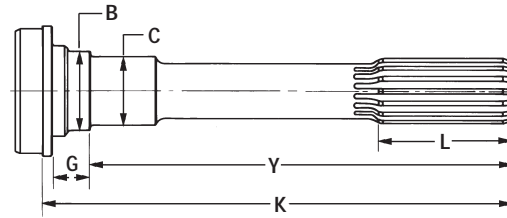


SPLINED MIDSHIP TUBE SHAFTS

Slip Yoke Design For Use with Outboard Slip Yokes



Style 1



Style 2

Note: Spline is Glidecote except where footnoted.

Note: Butt Diameter should be .007" to .010" larger than Inside Diameter of the tube.

C Shaft Support Bearing Diameter Max./Min.	Fits Tube		Y End of Spline to Bearing Shoulder	K End of Spline to Point of Weld	S t y l e	L Length of Spline	B Shoulder Diameter	G Length of Shoulder	Midship Tube Shaft Part Number
	Tube Diameter	Wall Thickness							
1.3784 Bearing Diameter									
1.3750-15 Based On 16 Spline									
1.3784/1.3779	2.5000	.0830	7.4060	8.4690	2	2.5000	1.6880	.8120	2-53-921
1.3784/1.3779	2.5000	.0830	7.8120	8.8750	2	2.5000	1.6880	.8120	2-53-681
1.3784/1.3779	3.0000	.0650	7.8120	8.8750	2	2.5000	1.6880	.8120	2-53-691
1.3784/1.3779	3.0000	.0830	6.9690	8.7500	2	3.0000	1.6880	.1600	2-53-1371
1.3784/1.3779	3.0000	.0830	7.9690	9.0310	2	2.5000	1.6880	.8120	2-53-711
1.3784 Bearing Diameter									
1.3750-16 Spline									
1.3784/1.3779	2.0000	.0830	5.9690	7.2810	1	4.4380	1.6880	.8120	2-53-121
1.3784/1.3779	2.0000	.0830	6.9380	8.2500	1	5.4060	1.6880	.8120	2-53-511
1.3784/1.3779	2.5000	.0650	6.9380	8.0000	1	5.4060	1.6880	.8120	2-53-531
1.3784/1.3779	2.5000	.0830	5.9690	7.0310	1	4.4380	1.6880	.8120	3-53-211
1.3784/1.3779	2.5000	.0830	6.7500	8.0940	1	4.9690	1.7190	1.1250	3-53-1351
1.3784/1.3779	2.5000	.0830	6.9380	8.0000	1	5.4060	1.6880	.8120	2-53-471
1.3784/1.3779	3.0000	.0650	6.9380	8.0000	1	5.4060	1.6880	.8120	2-53-491
1.3784/1.3779	3.0000	.0830	6.7500	8.0940	1	4.9690	1.7190	1.1250	3-53-1361
1.3784/1.3779	3.0000	.0830	6.7810	7.0310	1	4.4380	1.6880	.8120	3-53-1371
1.3784/1.3779	3.0000	.0830	6.9380	8.0000	1	5.4060	1.6880	.8120	2-53-501
1.3784/1.3779	3.0000	.0830	7.8480	8.9080	2	2.5000	1.6880	.8120	2-53-1131
1.3784/1.3779	3.5000	.0650	5.9690	7.0300	2	4.4400	1.6880	.8120	3-53-181
1.3784/1.3779	3.5000	.0650	6.7500	8.0940	1	4.9690	1.7190	1.1250	3-53-1381
1.3784/1.3779	4.0000	.0830	6.7810	7.0310	1	4.4380	1.6880	.8120	3-53-1391
1.3784 Bearing Diameter									
1.3750-31 Based On 32 Involute Spline									
1.3784/1.3779	2.7500	.0650	7.4690	8.8120	2	3.3440	1.7190	1.1250	3-53-1991
1.3784/1.3779	3.0000	.0830	7.4690	8.8120	2	3.3440	1.7190	1.1250	3-53-1181
1.3784/1.3779	3.5000	.0830	7.4690	8.8120	2	3.3440	1.7190	1.1250	3-53-1301
<i>Spline not Glidecoted</i>									
1.5752 Bearing Diameter									
1.4370-21 22 Involute Spline									
1.5752/1.5747	3.0000	.0830	8.9380	10.0620	2	3.5000	1.8100	.8800	3-53-2451
1.5752/1.5747	3.5000	.0650	7.3850	8.0000	2	3.5000	1.8120	.3750	3-53-2381
1.5752/1.5747	3.5000	.0830	7.7150	8.0800	2	3.5000	1.8000	.3750	3-53-2441



SPLINED MIDSHIP TUBE SHAFTS

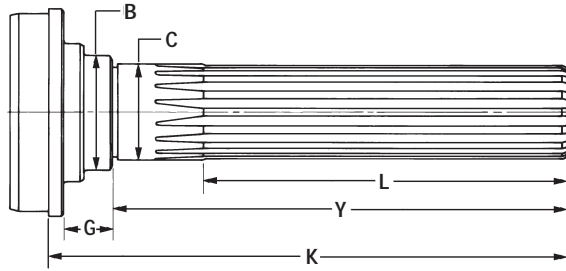
Slip Yoke Design For Use with Outboard Slip Yokes

C Shaft Support Bearing Diameter Max./Min.	Fits Tube		Y End of Spline to Bearing Shoulder	K End of Spline to Point of Weld	S t y l e	L Length of Spline	B Shoulder Diameter	G Length of Shoulder	Midship Tube Shaft Part Number
	Tube Diameter	Wall Thickness							
1.5752 Bearing Diameter									
1.5000-15 Based on 16 Spline									
1.5752/1.5747	3.0000	.0830	8.2400	9.3750	2	3.0000	1.8120	.8120	3-53-1551
1.5752/1.5747	3.0000	.0830	9.5000	10.6250	2	3.0000	1.8100	.8750	3-53-1951
<i>Use boot 211503X- order separately</i>									
1.5752/1.5747	3.0000	.0950	8.2340	9.3500	2	3.0000	1.8120	.8750	3-53-2291
1.5752/1.5747	3.5000	.0650	8.2300	9.3500	2	3.0000	1.8100	.8750	3-53-2011
1.5752/1.5747	3.5000	.0830	9.6250	10.7190	2	3.0000	1.8100	.8750	3-53-2281
<i>Use with boot no. 211503X-order separately.</i>									
1.5752/1.5747	4.0000	.0830	9.5000	10.6250	2	3.0000	1.8100	.8750	3-53-2181
1.5752/1.5747	4.0950	.1800	9.5000	10.6250	2	3.0000	1.8100	.8750	3-53-1981
1.5752 Bearing Diameter									
1.5000-16 Spline									
1.5752/1.5747	3.0000	.0830	5.9400	7.0620	1	4.4380	1.8100	.8750	3-53-1031
1.5752/1.5747	3.0000	.0830	7.1880	8.3120	1	5.6880	1.8100	.8750	3-53-1041
1.5752/1.5747	3.0000	.0830	8.0800	9.2000	1	6.5800	1.8100	.8750	3-53-1531
1.5752/1.5747	3.0000	.0830	9.0400	10.1600	1	7.5400	1.8100	.8750	3-53-1481
1.5752/1.5747	3.5000	.0830	5.9400	7.0620	1	4.4400	1.8100	.8750	3-53-1121
1.5752/1.5747	4.0000	.0830	5.9400	7.0620	1	4.4380	1.8100	.8750	3-53-1131
1.5752 Bearing Diameter									
1.5620-16 Spline									
1.5752/1.5747	3.0000	.0830	7.4700	8.5310	1	5.9400	1.9400	.8750	3-53-411
1.5752/1.5747	3.5000	.0830	7.4100	8.5310	1	5.9060	1.8100	.8750	3-53-1311
1.5752/1.5747	3.5000	.0830	7.4700	8.5310	1	5.9380	1.9400	.8120	3-53-451
1.5752/1.5747	3.5000	.0830	7.8800	9.2900	1	5.9380	2.0600	1.1560	3-53-441
1.5752/1.5747	4.0000	.0830	7.4100	8.5310	1	5.9060	1.8100	.8750	3-53-1211
1.5752/1.5747	4.0000	.0830	7.4700	8.5310	1	5.9380	1.9400	.8120	3-53-1191
1.5752 Bearing Diameter									
1.5620-23 Based on 24 Involute									
1.5752/1.5747	3.5000	.0830	7.5310	8.3310	2	3.5000	1.8030	.3220	55-53-11
<i>Refer to bulletin JOI-TEC-41 for important spline data</i>									
1.5752/1.5747	3.5000	.0830	8.6900	9.8900	2	3.0000	1.8120	.8750	3-53-2571
1.5752/1.5747	3.5000	.0830	8.7040	9.5000	2	3.5000	1.8030	.3220	55-53-51
<i>Refer to bulletin JOI-TEC-41 for important spline data</i>									
1.5752/1.5747	4.0000	.0830	7.5310	8.3310	2	3.5000	1.8030	.3220	55-53-21
<i>Refer to bulletin JOI-TEC-41 for important spline data</i>									
1.5752/1.5747	4.0000	.0830	8.7040	9.5000	2	3.5000	1.8030	.3220	55-53-31
<i>Refer to bulletin JOI-TEC-41 for important spline data</i>									
1.7720 Bearing Diameter									
1.7520-26 Based on 27 Involute Spline									
1.7720/1.7716	3.5000	.0950	8.9020	9.6930	2	3.5000	2.1540	.5540	70-53-51
<i>Refer to bulletin JOI-TEC-41 for important spline data</i>									
1.7720/1.7716	4.0000	.0830	8.1020	8.9020	2	3.5000	2.1540	.5540	70-53-11
<i>Refer to bulletin JOI-TEC-41 for important spline data</i>									
1.7720/1.7716	4.0000	.0830	8.9020	9.6930	2	3.5000	2.1540	.5540	70-53-21
<i>Refer to bulletin JOI-TEC-41 for important spline data</i>									
1.7721 Bearing Diameter									
1.5620-16 Spline									
1.7721/1.7716	3.5000	.0950	7.4800	8.5700	1	5.9400	2.1900	.8100	4-53-531
1.7721 Bearing Diameter									
1.7500-16 Spline									
1.7721/1.7716	3.5000	.0950	7.4690	8.5620	1	5.9380	2.1880	.8120	4-53-61
1.7721/1.7716	4.0000	.0830	7.4690	8.5620	1	5.9380	2.1880	.8120	4-53-101

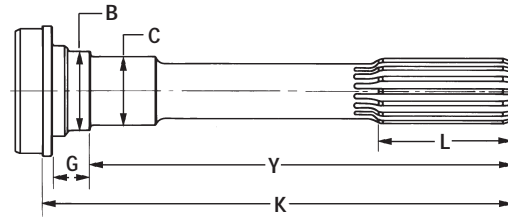


SPLINED MIDSHIP TUBE SHAFTS

Slip Yoke Design For Use with Outboard Slip Yokes



Style 1



Style 2

Note: Spline is Glidecote except where footnoted.

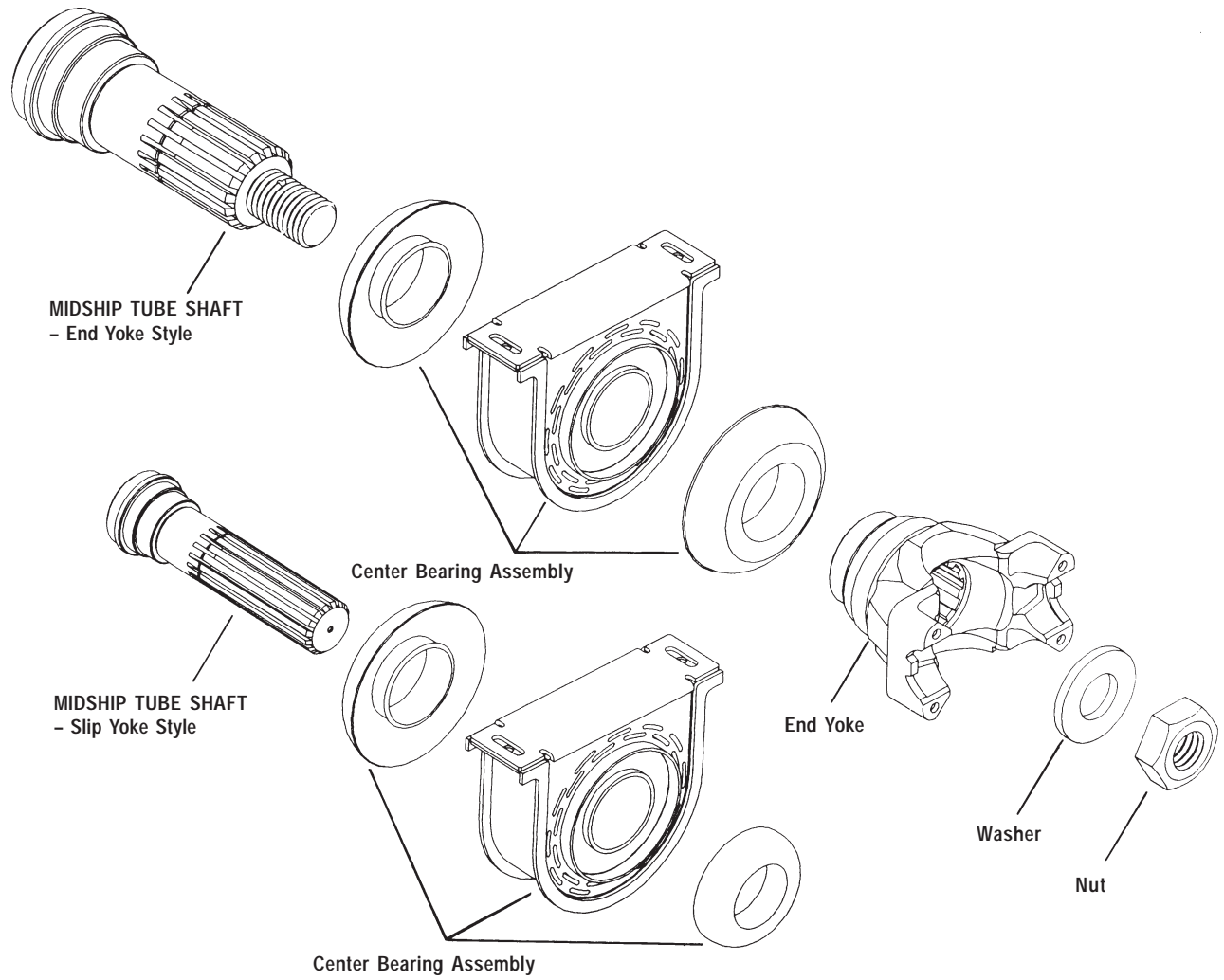
Note: Butt Diameter should be .007" to .010" larger than Inside Diameter of the tube.

C Shaft Support Bearing Diameter Max./Min.	Fits Tube		Y End of Spline to Bearing Shoulder	K End of Spline to Point of Weld	S t y l e	L Length of Spline	B Shoulder Diameter	G Length of Shoulder	Midship Tube Shaft Part Number
	Tube Diameter	Wall Thickness							
1.9685 Bearing Diameter									
1.9370-29 Based on 30 Involute Spline									
1.9685/1.9680	4.0000	.0950	8.7200	9.8620	4.0000	2	2.4410	.3540	100-53-11
									<i>Refer to bulletin JOI-TEC-41 for important spline data</i>
1.9685/1.9680	4.0000	.0950	9.5200	10.6610	2	4.0000	2.4410	.3540	100-53-21
									<i>Refer to bulletin JOI-TEC-41 for important spline data</i>
1.9685 Bearing Diameter									
1.9370-30 Involute Spline									
1.9685/1.9680	4.0000	.0950	8.9060	10.0000	2	4.0000	2.4380	.8120	90-53-21
									<i>Mates with 90-3-41X</i>
1.9685/1.9680	4.0000	.1340	8.9060	10.0000	2	4.0000	2.4380	.8120	90-53-41
2.1857 Bearing Diameter									
1.7500-34 Spline									
2.1857/2.1850	3.5000	.1340	6.2030	7.0000	2	2.0310	—	3.8750	5-53-331



COUPLING SHAFT COMPONENTS

Exploded View



Tube Shaft Part Number	Center Bearing Number	End Yoke/ Flange Number	Series	Washer	Nut	Bolt	Cotter Pin
100-53-11	212142-1X	-	-	-	-	-	-
100-53-21	212142-1X	-	-	-	-	-	-
100-53-21	212153-1X	-	-	-	-	-	-
140-53-11	210121-1X	140-4-11-1	SPL140	230123-6	250-74-11	-	-
140-53-11	210881-1X	140-4-11-1	SPL140	230123-6	250-74-11	-	-
140-53-11	212156-1X	140-4-11-1	SPL140	230123-6	250-74-11	-	-
140-53-21	210661-1X	140-4-1011-1	SPL140	230123-6	250-74-11	-	-
140-53-21	210875-1X	140-4-1011-1	SPL140	230123-6	250-74-11	-	-
140-53-31	210121-1X	140-4-11-1	SPL140	230123-6	250-74-11	-	-
140-53-41	210121-1X	140-1-15	SPL140	230123-6	250-74-11	-	-
140-53-41	210881-1X	140-1-15	SPL140	230123-6	250-74-11	-	-
140-53-41	210881-1X	140-1-25	SPL140	230123-6	250-74-11	-	-
250-53-11	210661-1X	170-4-1271-1	SPL170	230123-6	250-74-11	-	-
250-53-11	210661-1X	250-1-15	SPL250	230123-6	250-74-11	-	-
250-53-11	210661-1X	250-4-21-1	SPL250	230123-6	250-74-11	-	-
250-53-11	210661-1X	250-4-21-1	SPL250	230123-6	250-74-11	-	-
250-53-11	210875-1X	250-1-11	SPL250	230123-6	250-74-11	-	-
250-53-11	210875-1X	250-1-15	SPL250	230123-6	250-74-11	-	-
250-53-11	210875-1X	250-4-21-1	SPL250	230123-6	250-74-11	-	-
250-53-11	212066-1X	250-4-21-1	SPL250	230123-6	250-74-11	-	-
2-53-1011	211590-1X	2-4-7021-1	1310	230123-12	231781	-	-
2-53-1021X	211590-1X	2-4-7021-1	1310	230123-12	231781	-	-
2-53-1051	211574-1X	2-4-7201-1X	1310	230123-12	231781	-	-
2-53-1051	211589-1X	2-4-7291-1X	1310	230123-12	231781	-	-
2-53-1051	211938-1X	2-4-7291-1X	1310	230123-12	231781	-	-
2-53-1061X	211574-1X	2-4-7291-1X	1310	230123-12	231781	-	-
2-53-1071	211502X	2-4-6411-1X	1210	230123-12	231781	-	-
2-53-1081X	211502X	2-4-6411-1X	1310	230123-12	231781	-	-
2-53-1121	211618X	2-4-7281-1X	1310	230123-12	231781	-	-
2-53-1131	211579-1X	-	-	-	-	-	-
2-53-1141X	211589-1X	2-4-7291-1X	1310	230123-12	231781	-	-
2-53-1141X	211938-1X	2-4-7291-1X	1310	230123-12	231781	-	-
2-53-1151	210090-1X	281638	1310	-	16-74-101	-	-
2-53-1151	210090-1X	2-4-2671-1	1310	-	16-74-101	-	-
2-53-1161	211406X	2-4-6181-1X	1310	230123-6	231781	-	-
2-53-1161	211406X	2-4-7501-1X	1310	230123-6	231781	-	-
2-53-1171X	211406X	2-4-7501-1X	1310	230123-12	231781	-	-
2-53-1191	210090-1X	281638	1310	-	16-74-101	-	-
2-53-1191	210090-1X	2-4-2671-1	1310	-	16-74-101	-	-
2-53-1191	211134X	281638	1310	-	16-74-101	-	-
2-53-1191	211134X	2-4-2671-1	1330	-	16-74-101	-	-
2-53-1191	211161X	792978	1310	-	16-74-101	-	-
2-53-1191	211173X	1377366	1330	-	16-74-101	-	-
2-53-1191	211569-1X	2-4-2671-1	1310	-	16-74-101	-	-
2-53-121	210088-1X	-	-	-	-	-	-
2-53-1211	210090-1X	281638	1310	-	16-74-101	-	-
2-53-1211	210090-1X	2-4-2671-1	1310	-	16-74-101	-	-
2-53-1211	211757-1X	281638	1310	-	16-74-101	-	-
2-53-1271X	211747-1X	2-4-7571-1X	1310	230123-12	231781	-	-
2-53-1311	211750-1X	2-4-7561x	1310	230123-14	10-74-101	-	-
2-53-1321	211872-1X	2-4-7021-1	1310	230123-12	231781	-	-
2-53-1331	211590-1X	2-4-7021-1	1310	230123-12	231781	-	-
2-53-1351	211872-1X	2122460	1310	230123-12	231781	-	-
2-53-1351	211872-1X	2-4-7021-1	1310	230123-12	231781	-	-
2-53-1371	211925-1X	-	-	-	-	-	-
2-53-1371	211986-1X	-	-	-	-	-	-
2-53-1411	212169X	3-4-13611-1	1350	-	16-74-101	-	-
2-53-1411	212169X	3-4-14581-1	1350	-	16-74-101	-	-
2-53-1411	212169X	3-4-5721-1	1350	-	16-74-101	-	-
2-53-1411	212273X	3-4-14581-1	1350	-	16-74-101	-	-

Note: For detail information on Center Bearings, refer to J300P-9A.



Tube Shaft Part Number	Center Bearing Number	End Yoke/ Flange Number	Series	Washer	Nut	Bolt	Cotter Pin
2-53-1411	212275X	3-4-14581-1	1350	-	16-74-101	-	-
2-53-1411	212924X	3-4-5721-1	1350	-	16-74-101	-	-
2-53-1411	212985X	3-4-13611-1	1350	-	16-74-101	-	-
2-53-1411	212985X	3-4-14581-1	1350	-	16-74-101	-	-
2-53-1411	212985X	3-4-5721-1	1350	-	16-74-101	-	-
2-53-1511	5001874	-	1330	-	-	-	-
2-53-1511	212088-1X	-	1330	-	-	-	-
2-53-1571	212165-1X	2-4-8541-1X	1310	230123-14	231781	-	-
2-53-1571	212166-1X	2-4-8541-1X	1310	230123-14	231781	-	-
2-53-331	210090-1X	281638	1310	230123-11	-	500412-11	-
2-53-361	210090-1X	281638	1310	230123-11	-	500412-11	-
2-53-381X	211341X	2-4-6411-1X	1310	230123-12	231781	-	-
2-53-471	211175X	-	-	-	-	-	-
2-53-491	211175X	-	-	-	-	-	-
2-53-501	210088-1X	-	-	-	-	-	-
2-53-501	211175X	-	-	-	-	-	-
2-53-511	211175X	-	-	-	-	-	-
2-53-531	211175X	-	-	-	-	-	-
2-53-681	211175X	-	-	-	-	-	-
2-53-691	211175X	-	-	-	-	-	-
2-53-711	211130X	-	-	-	-	-	-
2-53-711	211131X	-	-	-	-	-	-
2-53-711	211175X	-	-	-	-	-	-
2-53-901	211431X	1567292	1210	230123-12	231781	-	-
2-53-901	211431X	2-4-6191-1	1210	230123-12	231781	-	-
2-53-901	211748-1X	2-4-6731-1X	1210	230123-12	231781	-	-
2-53-921	211415X	-	-	-	-	-	-
2-53-991	211478-1X	2-4-6731-1X	1210	230123-12	231781	-	-
2-54-351X	211406X	2-4-6181-1X	1310	230123-12	231781	-	-
2-54-351X	211406X	2-4-7501-1X	1310	230123-12	231781	-	-
2-54-361	211406X	2-4-6181-1X	1310	230123-12	231781	-	-
2-54-361	211406X	2-4-7501-1X	1310	230123-12	231781	-	-
2-54-371	211502X	2-4-8211-1X	1310	230123-12	231781	-	-
2-54-381X	211505X	2-4-6411-1X	1310	230123-12	231781	-	-
3-53-1031	210866-1X	-	-	-	-	-	-
3-53-1041	210866-1X	-	-	-	-	-	-
3-53-1121	210866-1X	-	-	-	-	-	-
3-53-1131	210866-1X	-	-	-	-	-	-
3-53-1181	210370-1X	-	-	-	-	-	-
3-53-1191	210391-1X	-	-	-	-	-	-
3-53-1191	210433-1X	-	-	-	-	-	-
3-53-1211	210866-1X	-	-	-	-	-	-
3-53-1301	210370-1X	-	-	-	-	-	-
3-53-1311	210866-1X	-	-	-	-	-	-
3-53-1351	210370-1X	-	-	-	-	-	-
3-53-1361	210370-1X	-	-	-	-	-	-
3-53-1391	210088-1X	-	-	-	-	-	-
3-53-1391	211200X	-	-	-	-	-	-
3-53-1481	210866-1X	-	-	-	-	-	-
3-53-1531	210866-1X	-	-	-	-	-	-
3-53-1551	211359X	-	-	-	-	-	-
3-53-1551	211499-1X	-	-	-	-	-	-
3-53-1551	211793-1X	-	-	-	-	-	-
3-53-1561	210866-1X	-	-	-	-	-	-
3-53-1781	210873-1X	924490	1410	-	16-74-101	-	-
3-53-1781	210873-1X	1702460	1410	-	16-74-101	-	-
3-53-1781	210873-1X	3-4-6561-1	1410	-	16-74-101	-	-
3-53-1781	210873-1X	3-4-6631X	1410	-	16-74-101	-	-
3-53-1791	210873-1X	924490	1410	-	16-74-101	-	-
3-53-1791	210873-1X	1702460	1410	-	16-74-101	-	-

Note: For detail information on Center Bearings, refer to J300P-9A.



Tube Shaft Part Number	Center Bearing Number	End Yoke/ Flange Number	Series	Washer	Nut	Bolt	Cotter Pin
3-53-1791	210873-1X	1826642	1410	-	16-74-101	-	-
3-53-1791	210873-1X	3-4-6561-1	1410	-	16-74-101	-	-
3-53-1791	210873-1X	3-4-6631X	1410	-	16-74-101	-	-
3-53-1801	210873-1X	1702460	1410	-	16-74-101	-	-
3-53-1801	210873-1X	3-4-6561-1	1410	-	16-74-101	-	-
3-53-1801	210873-1X	3-4-6561-2	1410	-	16-74-101	-	-
3-53-1801	210873-1X	1826642	1480	-	16-74-101	-	-
3-53-1801	210873-1X	3-4-6901-1	1480	-	16-74-101	-	-
3-53-181	210088-1X	-	-	-	-	-	-
3-53-1811	210391-1X	380282	1410	-	16-74-101	-	-
3-53-1821	210391-1X	380282	1410	-	16-74-101	-	-
3-53-1821	210391-1X	3-4-2941-1	1410	-	16-74-101	-	-
3-53-1821	210391-1X	3-4-4421X	1480	-	16-74-101	-	-
3-53-1831	210391-1X	380282	1410	-	16-74-101	-	-
3-53-1831	210391-1X	3-4-4421X	1480	-	16-74-101	-	-
3-53-1831	210391-1X	55247	1550	-	16-74-101	-	-
3-53-1831	210391-1X	931826	1550	-	16-74-101	-	-
3-53-1881	210391-1X	997538	1410	-	16-74-101	-	-
3-53-1891	210873-1X	1702460	1410	-	16-74-101	-	-
3-53-1891	210873-1X	3-4-6561-1	1410	-	16-74-101	-	-
3-53-1891	210873-1X	3-4-6561-2	1410	-	16-74-101	-	-
3-53-1891	210873-1X	3-4-6631X	1410	-	16-74-101	-	-
3-53-1921	211453X	3-4-10551-1	1410	98-216	16-74-11	-	500024-11
3-53-1951	211359X	-	-	-	-	-	-
3-53-1951	211359X	-	-	-	-	-	-
3-53-1951	211499X	-	-	-	-	-	-
3-53-1951	211499X	-	-	-	-	-	-
3-53-1951	211793-1X	-	-	-	-	-	-
3-53-1951	211848-1X	-	-	-	-	-	-
3-53-1951	211963-1X	-	-	-	-	-	-
3-53-1981	211359X	-	-	-	-	-	-
3-53-2011	211793-1X	-	-	-	-	-	-
3-53-2061	210873-1X	1702460	-	-	16-74-101	-	-
3-53-2061	210873-1X	3-4-11451-1	-	-	16-74-101	-	-
3-53-2061	210873-1X	3-4-6561-1	-	-	16-74-101	-	-
3-53-2061	210873-1X	3-4-6561-2	-	-	16-74-101	-	-
3-53-211	211175X	-	-	-	-	-	-
3-53-2171	232429	3-4-12271-1M	1480	232430	-	232431	-
3-53-2181	211848-1X	-	-	-	-	-	-
3-53-2181	211963-1X	-	-	-	-	-	-
3-53-2281	211359X	-	-	-	-	-	-
3-53-2281	211499X	-	-	-	-	-	-
3-53-2281	211848-1X	-	-	-	-	-	-
3-53-2281	211963-1X	-	-	-	-	-	-
3-53-2281	212093-2X	-	-	-	-	-	-
3-53-2291	211793-2X	-	-	-	-	-	-
3-53-2301	211966-1X	3-4-7391-1X	1480	-	16-74-101	-	-
3-53-2301	212053-1X	3-4-13881-1	1350	-	16-74-101	-	-
3-53-2301	212053-1X	3-4-13871-1	1410	-	16-74-101	-	-
3-53-2301	212053-1X	3-4-13921-1	1480	-	16-74-101	-	-
3-53-2331	211359X	-	-	-	-	-	-
3-53-2331	211499X	-	-	-	-	-	-
3-53-2331	211793-1X	-	-	-	-	-	-
3-53-2351	210433-1X	-	-	-	-	-	-
3-53-2361	212004-1X	3-4-13721-1X	1410	-	16-74-101	-	-
3-53-2381	212028-1X	-	-	-	-	-	-
3-53-2381	212030-1X	-	-	-	-	-	-
3-53-2381	212031-1X	-	-	-	-	-	-
3-53-2381	212032-1X	-	-	-	-	-	-
3-53-2441	212030-1X	-	-	-	-	-	-

Note: For detail information on Center Bearings, refer to J300P-9A.



Tube Shaft Part Number	Center Bearing Number	End Yoke/ Flange Number	Series	Washer	Nut	Bolt	Cotter Pin
3-53-2441	212031-1X	-	-	-	-	-	-
3-53-2441	212177-1X	-	-	-	-	-	-
3-53-2451	211359X	-	-	-	-	-	-
3-53-2451	211499X	-	-	-	-	-	-
3-53-2451	212020-1X	-	-	-	-	-	-
3-53-2471	211359X	-	-	-	-	-	-
3-53-2541	211966-1X	3-4-14621-1	1350	-	16-74-101	-	-
3-53-2541	211966-1X	3-4-14591-1	1410	-	16-74-101	-	-
3-53-2541	212053-1X	3-4-14621-1	1350	-	16-74-101	-	-
3-53-2541	212053-1X	3-4-14591-1	1410	-	16-74-101	-	-
3-53-2571	211499X	-	-	-	-	-	-
3-53-411	210433-1X	-	-	-	-	-	-
3-53-421	210119-1X	3-4-3331X	1480	-	16-74-101	-	-
3-53-421	210119-1X	47942	1550	-	16-74-101	-	-
3-53-421	210144-1X	3-4-3331X	1480	-	16-74-101	-	-
3-53-441	210140-1X	-	-	-	-	-	-
3-53-451	210433-1X	-	-	-	-	-	-
3-54-611	210367-1X	3-4-178-1X	1350	-	16-74-101	-	-
3-54-611	210367-1X	3-4-2851X	1410	-	16-74-101	-	-
3-54-611	210367-2X	3-4-178-1X	1350	-	16-74-101	-	-
4-53-101	210084-2X	-	-	-	-	-	-
4-53-101	210207-1X	-	-	-	-	-	-
4-53-111	210209-1X	1497982	1610	-	-	-	-
4-53-131	NO DATA	-	-	-	-	-	-
4-53-261	210084-2X	844170	1550	-	16-74-101	-	-
4-53-261	210084-2X	4-4-4211-1	1550	-	16-74-101	-	-
4-53-271	210084-2X	844170	1550	-	16-74-101	-	-
4-53-271	210084-2X	4-4-4211-1	1550	-	16-74-101	-	-
4-53-301	-	1899721	1550	-	-	-	-
4-53-341	210084-2X	4-4-6031-1	1550	-	231502	-	-
4-53-351	212264X	-	-	-	-	-	-
4-53-361	210391-1X	931826	1550	-	16-74-101	-	-
4-53-361	210391-1X	4-4-2051-1	1550	-	16-74-101	-	-
4-53-401	210084-2X	844170	1550	-	16-74-101	-	-
4-53-401	210084-2X	4-4-4211-1	1550	-	16-74-101	-	-
4-53-401	210084-2X	4-4-4211-2	1550	-	16-74-101	-	-
4-53-461	4-4-2051-1	-	-	-	-	-	-
4-53-501	232373	4-4-7101-1M	1550	-	-	-	-
4-53-531	210207-1X	-	1480	-	-	-	-
4-53-61	210084-2X	-	-	-	-	-	-
4-53-61	210207-1X	-	-	-	-	-	-
4-53-91	211118X	47942	1550	-	16-74-101	-	-
4-53-91	211118X	47942	1550	-	16-74-101	-	-
5-53-111	210084-2X	1497982	1610	-	16-74-101	-	-
5-53-111	210084-2X	5-4-1721	1610	-	16-74-101	-	-
5-53-131	210084-2X	5-4-1721	1610	-	16-74-101	-	-
5-53-141	210084-2X	1497982	1610	-	231502	-	-
5-53-141	210084-2X	5-4-1721	1610	-	231502	-	-
5-53-141	210084-2X	5-4-1721-1	1610	-	231502	-	-
5-53-141	210084-2X	77191	1650	-	231502	-	-
5-53-171	NO DATA	-	-	-	-	-	-
5-53-191	210084-2X	1497982	1610	-	231502	-	-
5-53-191	210084-2X	5-4-1721	1610	-	231502	-	-
5-53-191	210084-2X	5-4-1721-1	1610	-	231502	-	-
5-53-231	210121-1X	1030474	1610	-	231502	-	-
5-53-261	210084-2X	5-4-7171-1	1610	-	231502	-	-
5-53-271	210084-2X	5-4-7171-1	1610	-	231502	-	-
5-53-271	210084-2X	90-4-11-1	SPL90	-	231502	-	-
5-53-301	-	4-4-6461-1	1550	-	-	-	-

Note: For detail information on Center Bearings, refer to J300P-9A.



Important: See Safety Information in General Information Section (J300P-GI)

Tube Shaft Part Number	Center Bearing Number	End Yoke/ Flange Number	Series	Washer	Nut	Bolt	Cotter Pin
5-53-301	-	5-4-8071-1	1610	-	-	-	-
5-53-341	232634	6-4-9161-1M	1710	232374	-	232375	-
5-53-341	232634	6-4-9761-1M	1710	232374	-	232375	-
55-53-11	212028-1X	-	-	-	-	-	-
55-53-11	212031-1X	-	-	-	-	-	-
55-53-11	212031-1X	-	-	-	-	-	-
55-53-11	212032-1X	-	-	-	-	-	-
55-53-11	212144-1X	-	-	-	-	-	-
55-53-21	212031-1X	-	-	-	-	-	-
55-53-21	212144-1X	-	-	-	-	-	-
55-53-31	212031-1X	-	-	-	-	-	-
55-53-41	212031X	55-4-11-1	SPL55	230123-15	16-74-101	-	-
55-53-51	212031-1X	-	SPL55	-	-	-	-
6.3-53-21	210661-1X	6-4-7481-1	1710	-	231502	-	-
6.3-53-21	210661-1X	6.3-4-821-1	1760	-	231502	-	-
6.5-53-111	-	6.5-4-2151	1810	231296	231297	-	-
6.5-53-171	210661-1X	6.5-4-3591-1	1810	230123-6	231502	-	-
6.5-53-171	210875-1X	6.3-4-821-1	1760	230123-6	20-74-91	-	-
6.5-53-181	210661-1X	6.5-4-3591-1	1810	230123-6	231502	-	-
6.5-53-181	210875-1X	6.5-4-3591-1	1810	230123-6	20-74-91	-	-
6.5-53-191	210661-1X	6.3-1-25	1810	230123-6	20-74-91	-	-
6.5-53-21	210661-1X	6.5-4-1891	1810	230123-6	231502	-	-
6.5-53-21	210661-1X	6.5-4-1891-1	1810	230123-6	231502	-	-
6.5-53-21	210661-1X	6.5-4-7481-1	1810	230123-6	231502	-	-
6.5-53-21	210875-1X	6.5-4-1891	1810	230123-6	231502	-	-
6.5-53-21	210875-1X	6.5-4-1891-1	1810	230123-6	231502	-	-
6.5-53-21	210875-1X	6.5-4-7481-1	1810	230123-6	231502	-	-
6.5-53-51	210661-1X	6.5-1-2551	1760	230123-6	231502	-	-
6.5-53-51	210661-1X	6.5-1-1931	1810	230123-6	231502	-	-
6.5-53-51	210661-1X	6.5-4-1891	1810	230123-6	231502	-	-
6.5-53-51	210661-1X	6.5-4-1891-1	1810	230123-6	231502	-	-
6.5-53-51	210661-1X	8-4-851 (WB)	1880	230123-6	231502	-	-
6.5-53-51	210874-1X	6.5-4-1891	1810	230123-6	231502	-	-
6.5-53-51	210874-1X	8-4-851 (WB)	1880	230123-6	231502	-	-
6.5-53-51	210875-1X	6.5-4-1891-1	1760	230123-6	231502	-	-
6.5-53-51	210875-1X	6.5-1-1811	1810	230123-6	231502	-	-
6.5-53-91	210661-1X	6-4-5071-1X	1710	230123-6	20-74-91	-	-
6.5-53-91	210661-1X	6-4-5071X	1710	230123-6	20-74-91	-	-
6.5-53-91	210661-1X	6.5-1-1811	1810	230123-6	20-74-91	-	-
6.5-53-91	210661-1X	6.5-4-1891	1810	230123-6	20-74-91	-	-
6.5-53-91	210661-1X	6.5-4-1891-1	1810	230123-6	20-74-91	-	-
6.5-53-91	210661-1X	8-4-851(WB)	1810	230123-6	20-74-91	-	-
6.5-53-91	210875-1X	6-4-5071-1X	1710	230123-6	20-74-91	-	-
6.5-53-91	210875-1X	6-4-5071X	1710	230123-6	20-74-91	-	-
6.5-53-91	210875-1X	6.3-4-161	1760	230123-6	231502	-	-
6.5-53-91	210875-1X	6.3-4-161-1	1760	230123-6	231502	-	-
6.5-53-91	210875-1X	6.5-1-1811	1810	230123-6	231502	-	-
6.5-53-91	210875-1X	6.5-4-1891	1810	230123-6	231502	-	-
6.5-53-91	210875-1X	6.5-4-1891-1	1810	230123-6	231502	-	-
6.5-53-91	210875-1X	8-4-851(WB)	1810	230123-6	231502	-	-
6-53-201	210121-1X	29741	1710	230123-6	231502	-	-
6-53-201	210121-1X	1001283	1710	230123-6	231502	-	-
6-53-201	210121-1X	1381136	1710	230123-6	231502	-	-
6-53-201	210881-1X	29741	1710	230123-6	231502	-	-
6-53-201	210881-1X	1001283	1710	230123-6	231502	-	-
6-53-201	210881-1X	1381136	1710	230123-6	231502	-	-
6-53-211	211594-1X	6-4-2391-1	1710	230123-6	231502	-	-
6-53-241	210121-1X	29741	1710	230123-6	231502	-	-
6-53-241	210881-1X	29741	1710	230123-6	231502	-	-
6-53-261	-	37046	1710	230123-6	231502	-	-

Note: For detail information on Center Bearings, refer to J300P-9A.



Tube Shaft Part Number	Center Bearing Number	End Yoke/ Flange Number	Series	Washer	Nut	Bolt	Cotter Pin
6-53-311	210661-1X	6-4-5071-1X	1710	230123-6	231502	-	-
6-53-311	210661-1X	6-4-5071X	1710	230123-6	231502	-	-
6-53-311	210661-1X	6.3-4-161	1760	230123-6	231502	-	-
6-53-311	210661-1X	6.3-4-161-1	1760	230123-6	231502	-	-
6-53-311	210661-1X	6.5-1-1811	1810	230123-6	231502	-	-
6-53-311	210661-1X	6.5-1-1931	1810	230123-6	231502	-	-
6-53-311	210661-1X	6.5-1-2551	1810	230123-6	231502	-	-
6-53-311	210661-1X	6.5-4-1891	1810	230123-6	231502	-	-
6-53-311	210875-1X	6-4-5071-1X	1710	230123-6	231502	-	-
6-53-311	210875-1X	6-4-5071X	1710	230123-6	231502	-	-
6-53-311	210875-1X	6.3-4-161	1760	230123-6	231502	-	-
6-53-311	210875-1X	6.3-4-161-1	1760	230123-6	231502	-	-
6-53-311	210875-1X	6.5-1-1811	1810	230123-6	231502	-	-
6-53-311	210875-1X	6.5-1-1931	1810	230123-6	231502	-	-
6-53-311	210875-1X	6.5-1-2551	1810	230123-6	231502	-	-
6-53-311	210875-1X	6.5-4-1891	1810	230123-6	231502	-	-
6-53-331	211056X	106442	1710	-	500898J	-	-
6-53-411	210121-1X	1914392	1710	230123-6	231502	-	-
6-53-411	210121-1X	6-4-7141-1	1710	230123-6	231502	-	-
6-53-421	210121-1X	1914392	1710	230123-6	231502	-	-
6-53-421	210121-1X	6-4-7141-1	1710	230123-6	231502	-	-
6-53-471	210121-1X	6-4-5071X	1710	230123-6	231502	-	-
70-53-11	211963-1X	-	-	-	-	-	-
70-53-11	212135-1X	-	-	-	-	-	-
70-53-11	212145-1X	-	-	-	-	-	-
70-53-21	212135-1X	-	-	-	-	-	-
70-53-31	212134-1X	70-4-11-1	SPL70	230123-6	20-74-91	-	-
70-53-31	212145X	70-4-11-1	SPL70	230123-6	20-74-91	-	-
70-53-51	212135-1X	-	-	-	-	-	-
70-53-61	212134-1X	70-4-11-1	SPL70	230123-6	20-74-91	-	-
70-53-61	212261-1X	70-4-11-1	SPL70	230123-6	20-74-91	-	-
8-53-31	210748-1X	8-1-411	1850	230123-7	24-74-21	-	500024-16
8-53-41	211759-1X	6.5-4-2131	1810	230123-6	231502	-	-
8-53-61	210748-1X	8-4-351	1880	230123-7	24-74-21	-	500024-16
90-53-11	210084-2X	90-4-11-1	SPL90	-	231502	-	-
90-53-21	211625-1X	-	-	-	-	-	-
90-53-31	210084-2X	90-4-11-1	SPL90	-	231502	-	-
90-53-41	211625-1X	-	-	-	-	-	-

Note: For detail information on Center Bearings, refer to J300P-9A.



Important: See Safety Information in General Information Section (J300P-GI)

1-42-101	4	2-40-2831	4	3-40-1611	5
1-42-31	4	2-40-2851	4	3-40-1621	5
2-40-1011	4	2-40-2871	4	3-40-1871	5
2-40-1031	4	2-40-2941	5	3-40-1911	5
2-40-1041	4	2-40-971	4	3-40-2071	5
2-40-1071	4	2-42-181	4	3-40-2091	5
2-40-1131	4	2-42-581	4	3-40-2171	5
2-40-1211	5	2-53-1011	8	3-40-2241	5
2-40-1221	5	2-53-1051	8	3-40-481	5
2-40-1291	4	2-53-1071	8	3-42-451	5
2-40-1521	5	2-53-1131	12	3-53-1031	13
2-40-1531	5	2-53-1151	8	3-53-1041	13
2-40-1671	5	2-53-1161	8	3-53-1121	13
2-40-1701	4	2-53-1191	8	3-53-1131	13
2-40-1711	4	2-53-121	12	3-53-1181	12
2-40-1741	4	2-53-1211	8	3-53-1191	13
2-40-1771	4	2-53-1311	8	3-53-1211	13
2-40-1811	4	2-53-1321	8	3-53-1301	12
2-40-1841	4	2-53-1331	8	3-53-1311	13
2-40-1851	5	2-53-1351	8	3-53-1351	12
2-40-1871	5	2-53-1371	12	3-53-1361	12
2-40-1921	5	2-53-1411	8	3-53-1371	12
2-40-2021	4	2-53-1511	8	3-53-1381	12
2-40-2041	5	2-53-1571	8	3-53-1391	12
2-40-2051	5	2-53-471	12	3-53-1481	13
2-40-2091	5	2-53-491	12	3-53-1531	13
2-40-2211	4	2-53-501	12	3-53-1551	13
2-40-2231	5	2-53-511	12	3-53-1781	9
2-40-2241	4	2-53-531	12	3-53-1791	9
2-40-2301	4	2-53-681	12	3-53-1801	9
2-40-2361	5	2-53-691	12	3-53-181	12
2-40-2381	4	2-53-711	12	3-53-1811	9
2-40-2421	5	2-53-901	8	3-53-1821	9
2-40-2441	4	2-53-921	12	3-53-1831	9
2-40-2451	4	2-54-351X	8	3-53-1891	9
2-40-2461	5	2-54-361	8	3-53-191	8
2-40-2481	4	2-54-371	8	3-53-1951	13
2-40-2501	5	3-40-1101	5	3-53-1981	13
2-40-2531	5	3-40-1281	5	3-53-1991	12
2-40-2611	4	3-40-1411	5	3-53-2011	13
2-40-2631	5	3-40-1421	5	3-53-2061	9
2-40-2661	4	3-40-1431	5	3-53-211	12
2-40-2671	4	3-40-1471	5	3-53-2181	13
2-40-2681	4	3-40-1491	5	3-53-2281	13
2-40-2691	5	3-40-1501	5	3-53-2291	13
2-40-2761	5	3-40-1511	5	3-53-2301	9
2-40-2781	4	3-40-1521	5	3-53-2321	9
2-40-2791	4	3-40-1531	5	3-53-2361	9
2-40-2801	4	3-40-1551	5	3-53-2381	13
2-40-2811	5	3-40-1571	5	3-53-2441	13



3-53-2451 13	5-53-371 9	55-53-31 12
3-53-2541 8	6C-40-11 6	55-53-51 12
3-53-2571 13	6-40-181 7	70-40-11 6
3-53-411 13	6-40-51 7	70-40-31 6
3-53-421 9	6-40-521 7	70-40-71 6
3-53-441 13	6-40-541 7	70-53-11 13
3-53-451 13	6-40-61 7	70-53-21 13
3-54-611 8	6-40-621 7	70-53-51 13
4-40-1031 6	6-40-631 7	70-53-61 9
4-40-1061 6	6-40-701 7	90-40-11 6
4-40-721 6	6-40-711 7	90-40-21 6
4-40-741 6	6-40-741 7	90-40-41 6
4-40-761 6	6-40-821 7	90-53-11 9
4-40-781 6	6-40-831 7	90-53-21 14
4-40-891 6	6-40-891 7	90-53-31 9
4-40-951 6	6-53-151 9	90-53-41 14
4-40-961 6	6-53-201 9	100-40-11 6
4-40-991 6	6-53-211 9	100-40-31 6
4-53-101 13	6-53-241 9	100-53-11 14
4-53-271 9	6-53-261 10	100-53-21 14
4-53-301 11	6-53-271 10	140-53-11 9
4-53-331 10	6-53-311 10	140-53-21 10
4-53-351 10	6-53-331 10	140-53-31 9
4-53-361 9	6-53-351 11	140-53-41 9
4-53-401 9	6-53-411 9	250-53-11 10
4-53-501 10	6-53-421 9	
4-53-531 13	6-53-481 11	
4-53-61 13	6.3-53-21 10	
5-40-1011 6	6.5-40-141 7	
5-40-1031 7	6.5-40-191 7	
5-40-1041 6	6.5-40-201 7	
5-40-1051 7	6.5-40-251 7	
5-40-1101 6	6.5-53-111 11	
5-40-1121 6	6.5-53-171 10	
5-40-1151 6	6.5-53-181 10	
5-40-1181 7	6.5-53-51 10	
5-40-1191 6	6.5-53-91 10	
5-40-1241 7	8-40-101 7	
5-40-1341 7	8-40-91 7	
5-40-451 6	8-53-41 10	
5-40-471 6	8-53-61 11	
5-40-491 6	10-40-11 4	
5-40-501 6	10-53-18X 7	
5-53-111 9	27-40-31 4	
5-53-141 9	55-40-11 6	
5-53-191 9	55-40-31 6	
5-53-261 9	55-40-51 6	
5-53-271 9	55-40-71 6	
5-53-331 14	55-53-11 12	
5-53-341 11	55-53-21 12	





Dana Corporation
Heavy Vehicle Technologies &
Systems Service
PO Box 321
Toledo, Ohio 43697-0321
1-800-SAY-DANA (729-3262)

Dana Corporation
Heavy Vehicle Technologies &
Systems Service - Canada
5095 South Service Road
Beamsville, Ontario LOR 1B0
Tech Service: (905) 563-4991

Dana Corporation
Heavy Vehicle Technologies &
Systems Service - International
(419) 861-6325

www.dana.com
www2.dana.com/expert

