



DRIVELINE COMPONENTS CATALOG SLIP YOKE ASSEMBLIES



J300P-3
September 2004

Supersedes
Section 3, Dated
February 2003

Roadranger
MORE TIME ON THE ROAD™

Spicer driveshaft components are supplied by Dana Corporation and are supported by Roadranger— a unified team of people from Dana and Eaton representing both companies' products to give you the best, most reliable service in the industry.



How To Use This Catalog

INCLUDED IN THIS CATALOG

1. Transmission-type slip yokes- page 11, Hex, Square and Round Hole- page 17, and Splined Sleeves - page 18
2. Each page includes a column that provides the part number of the plug used in the end of most slip yokes.
3. A very important "Centerline to Face of Plug" dimension appears on each page.

HOW TO IDENTIFY A PART USING THIS CATALOG

To identify any slip yoke, four pieces of information are required:

1. Determine Series
2. Determine spline O.D.
3. Determine number of teeth
4. Determine length - centerline to end
5. Determine hub diameter (if a transmission-type slip yoke)

Series and all pertinent series dimensions appear as shown in the sample below:

1100 SERIES **E-2.656 D-.938 USE KIT 5-101X & 5-111X**

Spline O.D. and number of teeth are found at the beginning of each data section--

1.750-16 Spline

Individual part data is shown following the spline data heading--

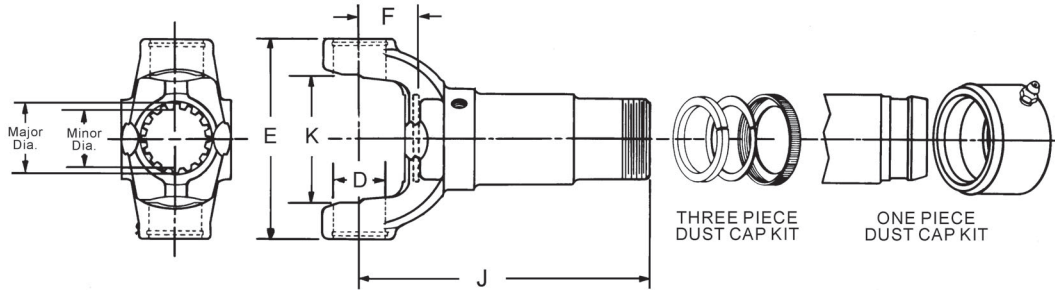
1.750 8.125 - 1.375 500168-2 D4M 4-68-38X SR 4-3-1641KX

Note that footnotes are listed immediately under the yoke dimensional data, alleviating the need to look at the bottom of the page.

IMPORTANT NOTICE: The data listed herein is correct to the best of our knowledge and belief; having been compiled from reliable and official sources of information. However, WE CANNOT ASSUME ANY RESPONSIBILITY for possible error.



Slip Yoke Assemblies LD & MD Driveshaft Style

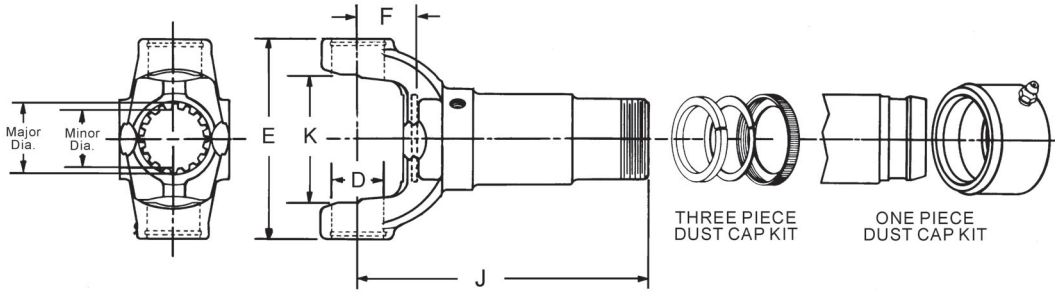


J C/L to End of Spline	Joint Angle	F C/L to Face of Plug	Part of Slip Yoke Assembly			Style	Slip Yoke Assembly Part Number
			Lube Fitting	Dust Cap & Washer Kit	Slip Yoke Plug Number		
SPL55 SERIES		E-4.440	D-1.374		USE KIT SPL55-1X		
1.5870-23 Based On 24 Involute Spline							
7.9490	—	1.7320	—	—	500166-26	SR	55-3-61X <i>Use boot kit 212094X; order separate</i>
9.1220	—	1.7320	—	—	500166-26	SR	55-3-81X <i>Use boot kit 212094X; order separate</i>
SPL70 SERIES		E-5.250	D-1.375		USE KIT SPL70X		
1.7760-26 Based On 27 Involute Spline							
8.4800	—	1.8900	—	—	70-68-18X	SR	70-3-21X <i>Use boot kit 212146X; order separate</i>
9.2790	—	1.8900	—	—	70-68-18X	SR	70-3-41X <i>Use boot kit 212146X; order separate</i>
SPL90 SERIES		E-5.375	D-1.625		USE KIT SPL90X		
1.9390-30 Involute Spline							
10.1000	25.0	1.7970	500168-2	90-86-18	5-68-108X	SR	90-3-21X
8.2500	25.0	1.7500	—	90-86-18	5-68-164	SR	90-3-41X <i>Mates with 90-40-21 and 90-53-21</i>
SPL100 SERIES		E-5.380 IN	D-1.625		USE KIT SPL100-1X		
1.9650-29 Based On 30 Involute Spline							
9.6810	—	1.7830	—	—	5-68-164	SR	100-3-41X <i>Use boot kit 212146X; order separate</i>
1000 SERIES		K-1.500	D-.938		USE KIT 5-170X		
1.0000-6 Spline							
5.5000	—	1.5000	500174-1	—	—	SR	10-3-131X
1.1250-10 Spline							
5.5000	—	—	500174-1	—	—	SR	10-3-81X
1.1560-26 Involute Spline							
5.5000	60.0	1.5310	500174-1	D2L	2-68-23	SR	10-3-291KX
1.2500-16 Spline							
4.4380	60.0	1.4000	500174-1	D2A	—	SR	10-3-121KX
5.5000	60.0	1.5620	500174-1	D2A	2-68-23	SR	10-3-18KX
1.2500-6 Spline							
5.5000	60.0	1.4000	500174-1	—	—	SR	10-3-51X
1100 SERIES		E-2.656	D-.938		USE KIT 5-101X & 5-111X		
1.0620-16 Spline							
2.8750	30.0	.9380	500174-1	D1A	1-68-14	SR	1-3-88KX
4.3120	30.0	.9380	500174-1	D1A	1-68-14	SR	1-3-18KX
1210 SERIES		E-2.688	D-1.062		USE KIT 5-443X		
1.2190-26 Based On 28 Involute Spline							
5.0620	—	1.2500	—	—	500166-20	SR	2-3-8811X <i>Use boot #40465, clamps #40540-1,-2; I.S. snap ring style</i>
5.1090	—	1.5470	—	—	500166-20	SR	2-3-9991X <i>Use boot kit 211513X; order separate</i>



Important: See Safety Information in General Information Section (J300P-GI)

Slip Yoke Assemblies LD & MD Driveshaft Style



J C/L to End of Spline	Joint Angle	F C/L to Face of Plug	Part of Slip Yoke Assembly			Style	Slip Yoke Assembly Part Number
			Lube Fitting	Dust Cap & Washer Kit	Slip Yoke Plug Number		
1210 SERIES (Continued)		E-2.688	D-1.062		USE KIT 5-443X		
1.2500-14 Based On 16 Spline							
6.3440	31.0	1.5470			500166-20	SR	2-3-10521X <i>Optional: use dust cap 211256X</i>
6.3750	20.0	1.2500			500166-20	SR	2-3-8861X <i>Use boot kit 211344X; order separately</i>
8.0000	20.0	1.2500			2-68-23	SR	2-3-8961X <i>Use boot kit 211344X; order separately</i>
1310 SERIES		E-3.469	D-1.062		USE KIT 5-153X, 5-785X, 5-810X		
1.2500-14 Based On 16 Spline							
6.5620	30.0	1.4380			500166-20	SR	2-3-10661X <i>Use boot kit 211344X; order separately</i>
1.2500-16 Spline							
3.5620	16.0	1.0000	500174-1	D2B	2-68-23	SR	2-3-3951KX
4.1250	16.0	1.0000	500174-1	D2B	2-68-23	SR	2-3-258KX
4.6880	18.0	1.0000	500174-1	D2A	2-68-23	SR	2-3-198KX
4.8750	30.0	1.1880	500174-1	D2K	2-68-23	SR	2-3-1781KX
5.0000	18.0	1.0000	500174-1	D2A	2-68-23	SR	2-3-1421KX
6.1250	15.0	1.0000	500174-1	D2F	2-68-23	SR	2-3-1461KX
6.5620	30.0	1.4380	500174-1	D2K	2-68-23	SR	2-3-4441KX
6.5620	30.0	1.4380	500174-1	211256X	2-68-23	SR	2-3-8841KX
1.3380-18 Based On 20 Involute Spline							
6.7240	—	1.4170		211121X	500166-22	SR	2-3-15101X
1.3750-15 Based On 16 Spline							
6.0000	20.0	1.0620			500166-22	SR	2-3-10411X <i>Use boot kit 211916X; order separate</i>
6.6880	20.0	1.0620	500174-1	211121X	2-68-143	SR	2-3-7661KX
6.7240	—	1.4170			500166-22	SR	2-3-12881X <i>Use boot kit 211916X; order separate</i>
6.8120	30.0	1.2500			500166-22	SR	2-3-11351X <i>Use boot kit 211932X; order separate</i>
7.8750	—	1.5000			500166-22	SR	2-3-12421X <i>Use boot kit 211916X; order separate</i>
1.3750-16 Spline							
3.7500	15.0	1.0000	500174-1	D2C	3-68-23	SR	2-3-178KX
4.1880	15.0	1.0000	500174-1	D2C	3-68-23	SR	2-3-348KX
5.3750	30.0	1.0000	500174-1	211121X	3-68-23	SR	2-3-12301KX
5.3750	15.0	1.0000	500174-1	D2C	3-68-23	SR	2-3-128KX
6.0000	20.0	1.0620	500174-1	D2C	2-68-143	SR	2-3-4951KX <i>Use dust cap kit D3E for reverse slip applications</i>
6.0000	20.0	1.0620			2-68-143	SR	2-3-4951X
6.0000	20.0	1.0620	500174-1	211121X	2-68-143	SR	2-3-7981KX
6.3440	20.0	1.0620	500174-1	D2C	2-68-143	SR	2-3-4071KX
6.7500	17.0	.8750	500174-1	D2M	3-68-23	SR	2-3-1931KX
6.8120	—	1.5000	500174-1	211121X	2-68-143	SR	2-3-10621KX 7260 Series
6.8120	30.0	1.5000	500174-1	211121X	2-68-143	SR	2-3-8001KX

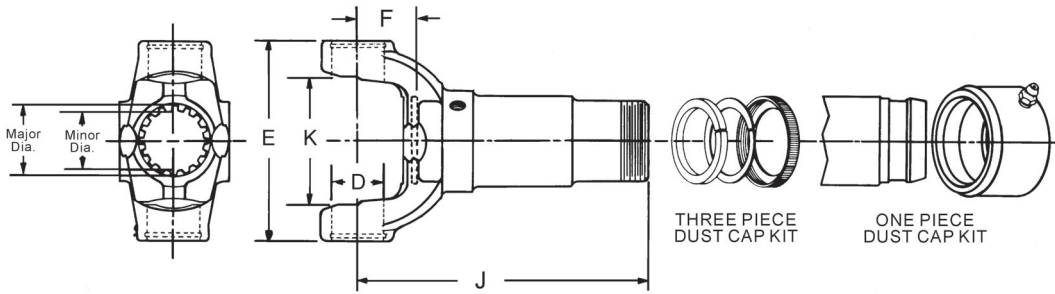


Slip Yoke Assemblies LD & MD Driveshaft Style

J C/L to End of Spline	Joint Angle	F C/L to Face of Plug	Part of Slip Yoke Assembly			Style	Slip Yoke Assembly Part Number
			Lube Fitting	Dust Cap & Washer Kit	Slip Yoke Plug Number		
1310 SERIES (Continued) E-3.469			D-1.062		USE KIT 5-153X, 5-785X, 5-810X		
1.3750-16 Spline (Continued)							
6.8750	30.0	1.5000	500174-1		3-68-23	SR	2-3-5221X <i>Use dust cap kit D3E for reverse slip applications</i>
7.8750	—	1.5000	500174-1		3-68-23	SR	2-3-5821X <i>Use dust cap kit D3E for reverse slip applications</i>
7.8750	30.0	1.5000	500174-1	211121X	2-68-143	SR	2-3-8021KX
7.8800	—	1.5000			3-68-23	SR	2-3-15711X
1.3750-31 Based On 32 Involute Spline							
6.6250	30.0	1.5310	500174-1	D2N	2-68-134	SR	2-3-7171KX
1.3770-31 Based On 32 Involute Spline							
6.7500	10.0	.8750	500174-1	211121X	2-68-143	SR	2-3-10261KX
6.7500	10.0	.8750			500166-22	SR	2-3-10801X <i>Use boot kit 211600X; order separate</i>
1.3780-31 Based On Involute 32 Spline							
6.8120	30.0	1.5000	500174-1	211411X	2-68-143	SR	2-3-10641KX
6.8120	30.0	1.5000			2-68-63	SR	2-3-9371X <i>Use boot kit 211600X; order separate</i>
1.3900-30 Based On Involute 31 Spline							
5.0620	—	1.4380	500174-1	211121X	3-68-23	SR	2-3-8311X <i>Spec 4X4 axle yoke w/hole in plug</i>
5.0620	—	1.4380	231330	2-86-298	500166-22	SR	2-3-8481X <i>Spec 4X4 axle yoke w/lube fitting in yoke</i>
5.0620	—	1.4380			500166-22	SR	2-3-8741X <i>Use boot #40465, clamps #40540-1,-2; I.S. snap ring style</i>
1.5000-16 Spline							
2.9060	16.0	.6560	500174-1	D3F	2-68-64	SR	2-3-7691KX
6.8750	30.0	1.5310	500174-1	D3A	3-68-33	SR	2-3-6061KX
1330 SERIES SR: E-3.875 OTHERS E-3.625,			D-1.062		USE KIT 5-213X,5-790X,5-812X		
1.2840-29 Based On 30 Spline							
6.6000	—	1.1000			500166-22	SR	2-3-13221X <i>Used on driveshaft w/outboard slip</i>
1.3380-19 Based On Involute 20 Spline							
6.7000	—	1.0000			500166-22	SR	2-3-13831X <i>Use boot kit 212094X; order separate</i>
1.3750-14 Based On 16 Spline							
6.7200	—	1.1020			500166-22	SR	2-3-14331X <i>Use boot kit 211932X; order separate</i>
1.3750-15 Based On 16 Spline							
5.4100	—	1.0600			500166-22	SR	2-3-13571X <i>Use boot kit 211916X; order separate</i>
6.0000	35.0	1.0000			500166-23	SR	2-3-8921X <i>Use boot kit 211932X; order separate</i>
6.6200	35.0	1.0000			500166-22	SR	2-3-11991X
6.6250	35.0	1.0000	500174-1	211121X	3-68-23	SR	2-3-7681KX
7.5000	—	1.0000	500174-1	211121X	3-68-23	SR	2-3-8941KX <i>Uses boot kit 211932X, order separate</i>
1.3750-16 Spline							
6.0000	15.0	1.0000	500174-1	D3E	3-68-23	SR	2-3-4681KX
6.0000	55.0	1.0000	500174-1	211121X	2-68-143	SR	2-3-7961KX
7.5000	30.0	1.0000	500174-1	211121X	2-68-28X	SR	2-3-12031KX
7.5000	17.0	1.0000			3-68-23	SR	2-3-7481X
7.5000	35.0	1.0000	500174-1	211121X	3-68-23	SR	2-3-8041KX
1.3780-31 Based On 32 Involute Spline							
6.0000	—	1.0000	500174-1	211121X	2-68-143	SR	2-3-10571KX
6.0000	—	1.0000			2-68-143	SR	2-3-10571X
1.5000-15 Based On 16 Spline							
7.3120	45.0	1.1880			3-68-33	SR	2-3-10871X <i>Used on driveshaft w/outboard slip</i>
7.5000	19.0	1.0000	500174-1	211158X	3-68-33	SR	2-3-8111KX



Slip Yoke Assemblies LD & MD Driveshaft Style



J C/L to End of Spline	Joint Angle	F C/L to Face of Plug	Part of Slip Yoke Assembly			Style	Slip Yoke Assembly Part Number
			Lube Fitting	Dust Cap & Washer Kit	Slip Yoke Plug Number		
1350 SERIES		E-3.875	D-1.188		USE KIT 5-178X OR 5-799X		
1.3750-15 Based On 16 Spline							
6.8120	45.0	1.1880	500174-1	211121X	3-68-33	SR	3-3-2701KX
1.3750-16 Spline							
5.2500	20.0	1.1880	500174-1	D3E	3-68-33	SR	3-3-758KX
5.6880	20.0	1.1880	500174-1	D2C	3-68-33	SR	3-3-1421KX
5.8120	20.0	1.1880	500174-1	D3G	3-68-33	SR	3-3-1501KX
6.6250	20.0	1.1880	500174-1	D3G	3-68-33	SR	3-3-2591KX
1.3775-31 Based On 32 Involute Spline							
6.6250	20.0	1.1880	500174-1	D3F	3-68-33	SR	3-3-2471KX
1.3900-30 Based On 31 Involute Spline							
4.8100	45.0	1.1900			500166-22	SR	3-3-3001X
<i>Use boot # 40929 & clamps 40540-4,-3 order separately</i>							
1.4630-21 Based On 22 Involute Spline							
7.3100	—	1.1600		-	500166-24	SR	3-3-6381X
<i>Use boot kit 212094X; order separate</i>							
7.3120	—	1.1900			500166-24	SR	3-3-6201X
<i>Use boot kit 212010X; order separate</i>							
7.3120	—	1.1900			500166-24	SR	3-3-6981X
<i>Use boot kit 212010X; order separate</i>							
1.5000-14 Based On 16 Spline							
7.3120	—	1.1880			500166-24	SR	3-3-4781X
<i>Use boot kit 212010X; order separate</i>							
7.3120	—	1.1880			500166-24	SR	3-3-5461X
<i>Use boot kit 211916X; order separate</i>							
1.5000-15 Based On 16 Spline							
6.9380	—	1.1880			500166-24	SR	3-3-4651X
<i>Use boot kit 211503X; order separate</i>							
7.3100	—	1.1880	500174-1	211158X	3-68-33	SR	3-3-5921KX
7.3120	—	1.1880	500174-1	211158X	3-68-33	SR	3-3-2801KX
<i>Use boot kit 211503X; order separate</i>							
1.5000-16 Spline							
3.3440	20.0	1.0620	500174-1	D3A	3-68-104	SR	3-3-2931KX
3.6880	—	1.1880	500174-1	D3A	3-68-33	SR	3-3-398KX
3.9380	20.0	1.1880	500174-1	D3A	3-68-33	SR	3-3-388KX
4.9380	20.0	1.1880	500174-1	D3K	3-68-33	SR	3-3-5181KX
5.8120	20.0	1.3120	500174-1	D3A	3-68-33	SR	3-3-598KX
6.7190	20.0	1.1880	500174-1	D3A	3-68-33	SR	3-3-1561KX
7.3120	20.0	1.1880	500174-1	D3A	3-68-33	SR	3-3-488KX
7.3120	—	1.1880		211158X	3-68-33	SR	3-3-4991KX
7.9300	—	1.1560			3-68-33	SR	3-3-3601X
<i>Use boot kit 211503X; order separate</i>							
8.0000	45.0	1.1880	500174-1	D3A	3-68-33	SR	3-3-2681KX
<i>One tooth removed for lube passage</i>							

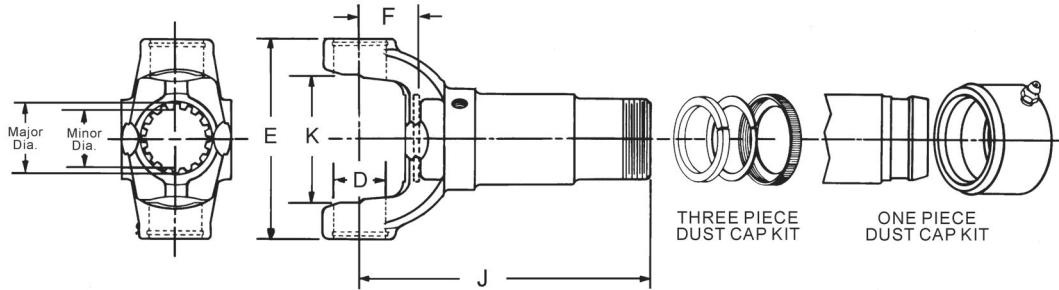


Slip Yoke Assemblies LD & MD Driveshaft Style

J C/L to End of Spline	Joint Angle	F C/L to Face of Plug	Part of Slip Yoke Assembly			Style	Slip Yoke Assembly Part Number
			Lube Fitting	Dust Cap & Washer Kit	Slip Yoke Plug Number		
1410 SERIES		E-4.438	D-1.188		USE KIT 5-160X OR 5-801X		
1.3750-16 Spline							
5.2400	20.0	1.1600				SR	3-3-4421X
5.2500	20.0	1.1560	500174-1	D3E	3-68-33	SR	3-3-788KX
5.8120	20.0	1.1560	500174-1	D3G	3-68-33	SR	3-3-1481KX
1.4630-21 Based On 22 Spline							
7.2800	—	1.1600			500166-24	SR	3-3-6611X
<i>Used on d-shaft w/outboard slip; Boot kit 212094X; order separate</i>							
7.2800	—	1.1600			500166-24	SR	3-3-6791X
<i>w/5.300" OD Dampener; Use boot kit 211503X; order separate</i>							
7.3100	—	1.1600			500166-24	SR	3-3-6341X
<i>Use boot kit 212094X; order separate</i>							
7.3110	—	1.1614			500166-24	SR	3-3-6701X
<i>Use boot kit 212094X; order separate</i>							
1.5000-14 Based On 16 Spline							
7.2810	—	1.1560			500166-24	SR	3-3-4871X
<i>Use boot kit 212010X; order separate</i>							
7.2810	45.0	1.1560			500166-24	SR	3-3-5491X
<i>Use boot kit 211503X; order separate</i>							
1.5000-15 Based On 16 Spline							
7.2810	45.0	1.1560	500174-1	211158X	3-68-33	SR	3-3-5411KX
7.8120	30.0	1.3440	500167-2	D3A	3-68-18X	SR	3-3-748KX
<i>Part has wide tooth and relief valve in welch plug.</i>							
8.5620	—	1.3440	500174-1	D3F	3-68-63	SR	3-3-768KX
<i>Part has wide tooth, mates w/3-40-531</i>							
1.5000-16 Spline							
3.9060	20.0	1.1560	500174-1	D3A	3-68-33	SR	3-3-468KX
5.2500	20.0	1.1560	500174-1	D3K	3-68-33	SR	3-3-2041KX
6.5000	55.0	1.1560	500174-1	D3A	3-68-33	SR	3-3-118KX
6.6880	28.0	1.3440	500174-1	D3B	3-68-33	SR	3-3-798KX
7.8120	—	1.3440	500174-1		3-68-33	SR	3-3-4551X
7.8120	28.0	1.3440	500174-1	D3A	3-68-33	SR	3-3-508KX
7.8120	20.0	1.3440	500174-1	211158X	3-68-33	SR	3-3-5481KX
8.5620	—	1.3440	500174-1	D3J	3-68-113	SR	3-3-1831KX
1.5280-23 Involute Spline							
6.8100	—	1.3120	500174-1		3-68-163	SR	3-3-6641X
1.5620-16 Spline							
6.8120	21.0	1.3120	500174-1	D3H	3-68-163	SR	3-3-1701KX
1.5640-22 Based On 24 Involute Spline							
6.7200	—	1.2200			500166-26	SR	3-3-6041X
<i>Use boot kit 212007X; order separate</i>							
1.5870-23 Based On 24 Involute Spline							
6.7200	—	1.2200			500166-26	SR	3-3-7001X
<i>Use boot kit 212007X; order separate</i>							
1.6050-15 Involute Spline							
5.7500	—	1.3440	500174-1	D4G	3-68-163	SR	3-3-3871KX
1.6540-20 Involute Spline							
4.8120	—	1.3120			3-68-183	SR	3-3-3791X
<i>Hub dia. not ground</i>							
1.7500-16 Spline							
3.2500	—	1.1880	500174-1	D4F	3-68-54	SR	3-3-1511KX
1480 SERIES		E-4.438	D-1.375		USE KIT 5-188X OR 5-803X		
1.5620-16 Spline							
6.0000	26.0	1.3120			3-68-163	SR	3-3-5141X
6.8120	21.0	1.3120	500174-1	D3H	3-68-163	SR	3-3-1601KX
9.5000	35.0	2.0000	500174-1	D3H	3-68-163	SR	3-3-1641KX
1.5640-23 Based On 24 Involute Spline							
6.8100	—	1.3120				SR	3-3-6061X
<i>Use boot kit 212007X; order separate</i>							
1.7500-16 Spline							
6.8120	—	1.6800			4-68-68X	SR	3-3-5191X



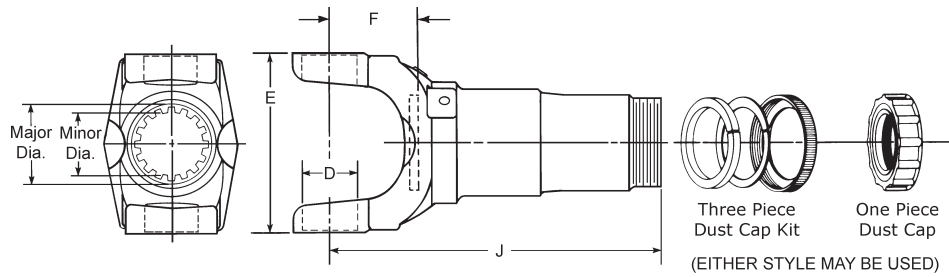
Slip Yoke Assemblies LD & MD Driveshaft Style



J C/L to End of Spline	Joint Angle	F C/L to Face of Plug	Part of Slip Yoke Assembly			Style	Slip Yoke Assembly Part Number
			Lube Fitting	Dust Cap & Washer Kit	Slip Yoke Plug Number		
1480 SERIES (Continued)		E-4.438	D-1.375		USE KIT 5-188X OR 5-803X		
1.7840-27 Involute Spline							
3.7190	—	1.1090			3-68-203	SR	3-3-3121X
2.2500-10 Spline							
3.7190	8.0	1.1880	500174-1	D3D	3-68-93	SR	3-3-1621KX
1550 SERIES		E-5.250	D-1.375		USE KIT 5-155X OR 5-808X		
1.7500-16 Spline							
5.3750	45.0	1.3750	500168-2	D4M	4-68-143	SR	4-3-1751KX
6.8750	22.0	1.3750	500168-2	D4K	4-68-143	SR	4-3-1241KX
7.5620	35.0	2.0620	500168-2	D4M	4-68-143	SR	4-3-2121KX
8.1250	22.0	1.3750	500168-2	D4J	4-68-143	SR	4-3-1411KX
9.0630	35.0	2.0620	500168-2	D4M	4-68-143	SR	4-3-2141KX
10.0620	35.0	2.0620	500168-2	D4J	4-68-143	SR	4-3-1431KX
1.8140-28 Involute Spline							
10.5000	—	2.1250		231973	4-68-163	SR	4-3-2331X <i>Includes dust cap</i>
2.0000-16 Spline							
4.8750	22.0	1.4690	500168-2	5-86-68	4-68-43	SR	4-3-1921KX
8.8120	—	2.7300	500167-2	5-86-68	5-68-78X	SR	4-3-2041KX <i>Relief valve in plug</i>
2.5000-16 Spline							
3.5000	8.0	1.1250	500168-2	D4L	4-68-74	SR	4-3-1261KX



Slip Yoke Assemblies HD Driveshaft Style



J C/L to End of Spline	Joint Angle	F C/L to Face of Plug	Part of Slip Yoke Assembly			Style	Slip Yoke Assembly Part Number
			Lube Fitting	Dust Cap & Washer Kit	Slip Yoke Plug Number		
1610 SERIES		E-5.312	D-1.875		USE KIT 5-279X, 5-674X		
2.0000-15 Based On 16 Spline							
9.3120	35.0	1.9380			5-68-78X	BP	5-3-458X
2.0000-16 Spline							
6.7500	—	2.6880			5-68-174	BP	5-3-398X
7.4800	—	3.1900	500168-5	5-86-68	5-68-174	BP	5-3-3321KX
7.8120	22.0	1.4400	500168-2	5-86-68	5-68-174	BP	5-3-108KX
8.1880	—	1.9400	500168-2	5-86-68	5-68-54	BP	5-3-488KX
8.8750	22.0	1.4400	500168-2	5-86-68	5-68-174	BP	5-3-368KX
9.3120	30.0	3.1880	500168-2	5-86-68	5-68-174	BP	5-3-288KX
9.8120	21.0	2.6880	500168-2	5-86-68	5-68-174	BP	5-3-128KX
10.3120	27.0	1.9380	500168-2	5-86-68	5-68-174	BP	5-3-1411KX
10.3120	35.0	2.4400	500168-2	5-86-68	5-68-164	BP	5-3-1711KX
10.8120	35.0	3.1880	500168-2	5-86-68	5-68-164	BP	5-3-2261KX
11.9380	45.0	3.6880	500168-2	5-86-68	5-68-164	BP	5-3-3121KX
2.5000-16 Spline							
9.5000	—	2.0000	500168-2	6.3-86-18	6-68-64	BP	5-3-3101KXM <i>Metric yoke</i>
2.6720-17 Based On 18 Involute Spline							
3.5000	12.0	1.3750	500168-2	D5C	5-68-53	BP	5-3-1861KX
2.6720-18 Involute Spline							
3.5000	8.0	1.2500	500168-2		5-68-33	BP	5-2-3231X
2.6760-18 Involute Spline							
3.5000	8.0	1.2500	500168-2	D5C	5-68-33	BP	5-3-168KX
4.2500	8.0	1.2500	500168-2	D5C	5-68-33	BP	5-3-198KX
1650 SERIES		E-5.969	D-1.625		USE KIT 5-165X		
2.0000-16 Spline							
8.1560	—	1.7810	500168-2	5-86-88	5-68-63	SR	5-3-1571KX
1710 SERIES		E-6.094 (6.190 FOR HR STYLE) D-1.938		USE KIT 5-280X, 5-675X			
2.5000-15 Based On 16 Spline							
12.7190	40.0	3.2190	500168-2	6.3-86-18	6-68-38X	BP	6-3-3541KX <i>Relief valve in plug</i>
2.5000-16 Spline							
6.7190	30.0	1.7190	500168-2	6.3-86-18	6-68-74	BP	6-3-2761KX
7.4690	30.0	1.7190	500168-2	6.3-86-18	6-68-74	BP	6-3-2741KX
7.9690	20.0	1.7190	500168-2	6.3-86-18	6-68-74	BP	6-3-2801KX
8.4690	30.0	1.7190	500168-2		6-68-74	BP	6-3-2721X
8.8440	22.0	1.7190	500168-2	6.3-86-18	6-68-74	BP	6-3-2631KX
9.3440	—	2.5160	500174-1	211158X	6-68-74	BP	6-3-3521KX
9.5940	22.0	1.7190	500168-2	6.3-86-18	6-68-74	BP	6-3-2671KX
10.3100	—	2.4400	500167-2	6.3-86-18	6-68-63	BP	6-3-3151KX
10.3120	—	2.4400		6.3-86-18	6-68-18X	SR	6-3-3611KXM
10.7190	45.0	3.2190	500168-2	6.3-86-18	6-68-64	BP	6-3-3481KX
11.6880	30.0	2.4380	500168-2	6.3-86-18	6-68-74	BP	6-3-2651KX
11.6880	30.0	2.4380	500168-2	6.3-86-18	6-68-18X	BP	6-3-3171KX <i>Relief valve in plug</i>

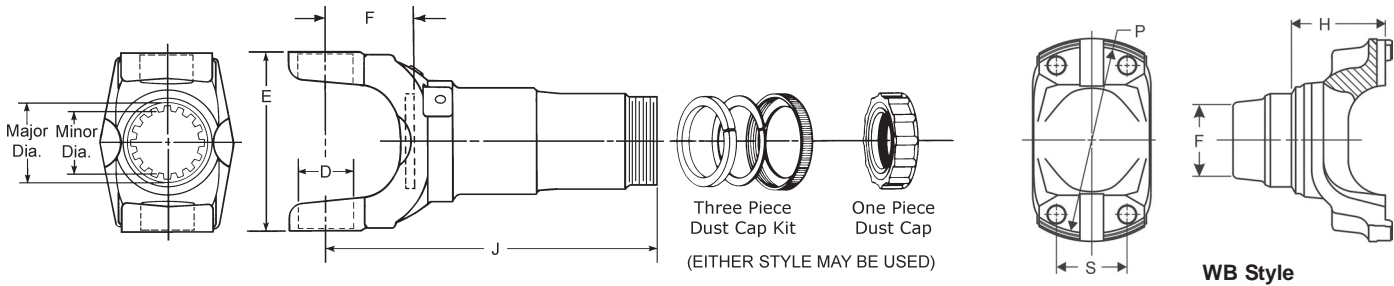
Continued on next page



Important: See Safety Information in General Information Section (J300P-GI)

Slip Yoke Assemblies HD Driveshaft Style

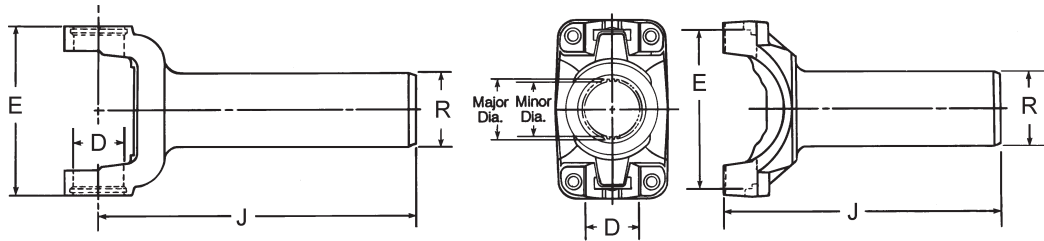
J300P-3



J C/L to End of Spline	Joint Angle	F C/L to Face of Plug	Part of Slip Yoke Assembly			Style	Slip Yoke Assembly Part Number
			Lube Fitting	Dust Cap & Washer Kit	Slip Yoke Plug Number		
1710 SERIES (Continued) E-6.094 (6.190 FOR HR STYLE) D-1.938 USE KIT 5-280X, 5-675X							
2.5000-16 Spline (Continued)							
11.7190	45.0	3.2190	500168-2	6.3-86-18	6-68-64	BP	6-3-3461KX
11.9690	45.0	3.2190	500168-2	6.3-86-18	6-68-64	BP	6-3-3501KX
12.7190	45.0	3.2190	500168-2	6.3-86-18	6-68-64	BP	6-3-3441KX
12.7190	45.0	3.2190			6-68-64	BP	6-3-3441X
2.5000-9 Based On 10 Spline							
11.0000	22.0	3.2500	500168-2	D6B	6-68-63	BP	6-3-1601KX
3.2500-18 Involute Spline							
4.1250	8.0	1.3750	500168-2	D6E	6-68-53	BP	6-3-1661KX
4.8750	8.0	1.3750	500168-2	D6E	6-68-53	BP	6-3-1481KX
1760 SERIES E-7.000 (7.094 FOR HR STYLE) D-1.938 USE KIT 5-407X, 5-677X							
2.5000-16 Spline							
9.2500	30.0	2.9220	500168-2	6.3-86-18	6-68-74	BP	6.3-3-41KX
11.1560	30.0	2.4690	500168-2	6.3-86-18	6-68-64	BP	6.3-3-21KX
<i>Metal, slip yoke plug no. is 6.3-68-14</i>							
1810 SERIES E-7.547 (7.643 FOR HR STYLE) D-1.938 USE KIT 5-281X, 5-676X							
3.0000-16 Spline							
7.6200	30.0	3.1400			6.5-68-74	BP	6.5-3-1741X
8.0620	30.0	2.9690	500168-2	6.5-86-38	6.5-68-74	BP	6.5-3-1571KX
8.9380	30.0	1.5620	500168-2	6.5-86-38	6.5-68-74	BP	6.5-3-1431KX
10.2500	30.0	2.3750	500168-2	6.5-86-38	8-68-13	BP	6.5-3-1351KX
11.8750	30.0	2.3750	500168-2	6.5-86-38	6.5-68-64	BP	6.5-3-1371KX
11.8750	30.0	2.3750			8-68-13	BP	6.5-3-1371X
3.2500-18 Involute Spline							
5.3750	12.0	1.5000	500168-2	D6E	6-68-53	BP	6.5-3-1451KX
1880 SERIES E-8.094 D-2.188 USE KIT 5-308X							
3.0000-16 Spline							
10.0310	22.0	2.0310	500168-2	6.5-86-38	8-68-13	BP	8-3-391KX
11.6560	22.0	2.4690	500168-2	6.5-86-38	8-68-13	BP	8-3-411KX
4.1560-24 Involute Spline							
5.0310	8.0	1.7500	500168-2	D9A	8-68-24	BP	8-3-431KX
5C SERIES WB STYLE P-4.530 S-1.688 KEYWAY-.561 USE KIT 5C-1X							
1.5640-23 Based on 24 Involute Spline							
6.8900	—	1.4370		4-86-48	4-68-193	WB	5C-3-21X
6C SERIES WB STYLE P-5.530 S-1.688 KEYWAY-.561 USE KIT 6C-1X							
1.9390-30 Involute Spline							
6.5740	—	1.1220		4-86-58	5-68-224	WB	6C-3-21X



Slip Yoke Assemblies For Transmission Applications



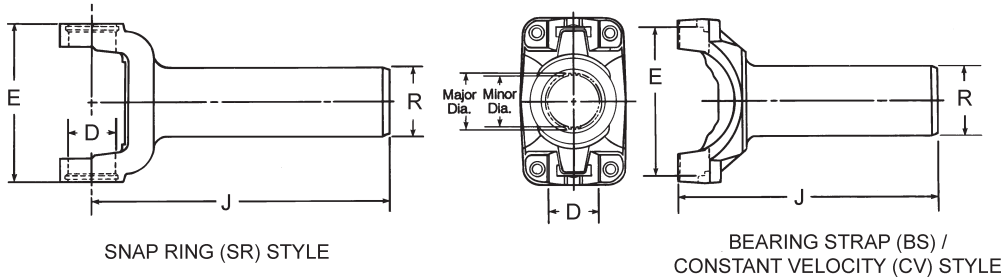
SNAP RING (SR) STYLE

BEARING STRAP (BS) /
CONSTANT VELOCITY (CV) STYLE

J	R	Counterbore Diameter	Style	Slip Yoke Plug Number	Slip Yoke Assembly Part Number
C/L to End of Spline	Ground Hub Diameter				
SPL55 SERIES		E-4.440	D-1.374	USE KIT SPL55-1X	
1.6150-30 Based On 31 Involute Spline					
8.3390	2.1990	—	SR	500166-28	55-3-21X
1210 SERIES		E-2.688	D-1.062	USE KIT 5-443X	
1.1130-24 Based On 25 Involute Spline					
5.8750	1.3742	—	SR	500166-20	2-3-10071X
1310 SERIES		E-3.469	D-1.062	USE KIT 5-153X, 5-785X, 5-810X	
1.0050-22 Based On 24 Involute Spline					
6.0450	1.3765	1.0430	SR	500166-20	2-3-13461X
1.1040-20 Based On 21 Involute Spline					
6.0000	1.4960	—	SR	500166-20	2-3-9701X
1.1130-24 Based On 25 Involute Spline					
6.5000	1.3750	—	SR	500166-20	2-3-8431X
8.2500	1.3742	1.1940	SR	2-68-153	2-3-8891X
1.1230-24 Based On 26 Involute Spline					
6.0400	1.4945	1.1420	SR	500166-20	2-3-11731X
6.0450	1.4946	1.1600	SR	500166-20	2-3-13891X
1.1250-10 Spline					
3.4690	1.6250	—	SR	2-68-44	2-3-7501X
1.1580-25 Based On 26 Involute Spline					
6.0000	1.5585	—	SR	500166-20	2-3-9781X
6.0000	1.5585	—	SR	500166-20	2-3-8731X
1.1720-16 Spline					
4.8750	1.5000	—	SR	500166-20	2-3-1331X
1.1760-26 Based On 27 Involute Spline					
4.8750	1.5000	—	SR	500166-20	2-3-4911X
4.8910	1.5025	—	SR	500166-20	2-3-10501X
4.8910	1.5000	1.2600	SR	500166-20	2-3-9211X
<i>Corvette w/o vibration dampener</i>					
5.4690	1.5000	—	SR	500166-20	2-3-6081X
5.4690	1.5000	—	SR	2-68-23	2-3-9191X
5.7500	1.5025	—		500166-20	2-3-14771X
<i>Nickel plated</i>					
5.7500	1.5000	—	SR	500166-20	2-3-13051X
<i>Hub diameter not ground</i>					
5.7500	1.5025	—	SR	500166-20	2-3-12411X
5.7500	1.6025	—	SR	500166-20	2-3-15321X
<i>W/4.500" OD dampener</i>					
6.0000	1.4995	—	SR	500166-20	2-3-10391X
6.4200	1.5025	1.2320	SR	500166-20	2-3-11071X
7.6200	1.5025	—	SR	500166-20	2-3-14861X
<i>Nickel plated</i>					
7.6200	1.5025	—	SR	500166-20	2-3-13351X
7.6200	1.5025	—	SR	500166-20	2-3-14871X
<i>Nickel plated yoke w/vibration dampener</i>					



Slip Yoke Assemblies For Transmission Applications



J C/L to End of Spline	R Ground Hub Diameter	Counterbore Diameter	Style	Slip Yoke Plug Number	Slip Yoke Assembly Part Number
1310 SERIES (Continued) E-3.469 D-1.062 USE KIT 5-153X, 5-785X, 5-810X					
1.2010-22 Based On 23 Involute Spline					
6.4200	1.4900	1.2340	SR	500166-20	2-3-14571X
1.2200-27 Based On 28 Involute Spline					
5.3900	1.4965	—	SR	2-68-83	2-3-10761X
6.5000	1.4917	—	SR	500166-20	2-3-12981X
6.5000	1.5000	—	SR	500166-20	2-3-8251X
7.0000	1.4977	—	SR	500166-20	2-3-12671X
1.2200-28 Involute Spline					
6.0000	1.5000	—	SR	500166-20	2-3-4871X
1.2500-15 Based On 16 Spline					
5.3800	1.7000	1.2625	SR	2-68-23	2-3-388X <i>Part has one wide tooth</i>
1.2840-28 Based On 30 Involute Spline					
6.1650	1.6521	1.3190	SR	500166-22	2-3-13311X
6.2660	1.6521	1.3200	SR	500166-22	2-3-14001X
7.2700	1.6521	1.3240	SR	500166-22	2-3-12461X
7.4200	1.6521	1.3190	SR	500166-20	2-3-10131X
1.2840-29 Based On 30 Involute Spline					
6.7500	1.6805	—		500166-22	2-3-14791X <i>Nickel plated</i>
6.7500	1.6805	—	SR	500166-22	2-3-13551X
9.0000	1.6800	—	SR	500166-22	2-3-16161X
9.3300	1.6805	—	SR	500166-22	2-3-14981X <i>Nickel plated</i>
1.3780-31 Based On 32 Involute Spline					
4.8800	1.8855	—	SR	500166-22	2-3-13131X
1.3900-30 Based On 31 Involute Spline					
7.0000	1.6842	—	SR	500166-22	2-3-15631X
1.3970-31 Based On 32 Involute Spline					
5.1880	1.6880	1.4580	SR	500166-22	2-3-5281X
5.5000	1.8855	—	SR	500166-22	2-3-10431X
1.4030-21 Involute Spline					
4.1300	2.0000	—	SR	2-68-154	2-3-9811X
1.5640-24 Involute Spline					
4.1250	2.0000	—	SR	2-68-154	2-3-9761X
1330 SERIES SR: E-3.875 OTHERS E-3.625, D-1.062 USE KIT 5-213X,5-790X,5-812X					
1.1130-24 Based On 25 Involute Spline					
6.8600	1.3742	—	SR	500166-20	2-3-13721X
6.8600	1.3742	—	SR	500166-20	2-3-15461X <i>Nickel plated</i>
1.1580-25 Based On 26 Involute Spline					
6.1800	1.5585	—	SR	500166-20	2-3-15051X
7.0000	1.5585	—	SR	500166-20	2-3-14311X <i>Nickel plated</i>
1.1720-26 Based On 27 Involute Spline					
6.7600	1.5025	1.2170	SR	500166-20	2-3-11781X



Slip Yoke Assemblies For Transmission Applications

J	R	Counterbore Diameter	Style	Slip Yoke Plug Number	Slip Yoke Assembly Part Number
C/L to End of Spline	Ground Hub Diameter				

1330 SERIES (Continued) SR: E-3.875 OTHERS E-3.625, D-1.062

USE KIT 5-213X,5-790X,5-812X

1.1760-26 Based On 27 Involute Spline

5.4700	1.5025	—	SR	500166-20	2-3-12081X
5.4700	1.5025	1.2180	SR	500166-20	2-3-12371X
5.4700	1.5025	1.2180	SR	500166-20	2-3-12361X
<i>W/c-bore and vibration dampener</i>					
5.7600	1.5025	—	SR	500166-20	2-3-13671X
6.4170	1.5020	1.2200	SR	500166-20	2-3-16061X
6.4200	1.5030	1.2340	SR	500166-20	2-3-15721X
6.4200	1.5030	1.2340	SR	500166-20	2-3-15391X
6.6200	1.5025	—	SR	500166-20	2-3-15351X
<i>W/4.500" OD dampener</i>					
6.6200	1.5025	—	SR	500166-20	2-3-15341X
<i>Nickel plated</i>					
6.7600	1.5000	1.2180	SR	2-68-23	2-3-12051X
7.2900	1.5585	—	SR	500166-20	2-3-14191X
7.2900	1.5585	—	SR	500166-20	2-3-14171X
<i>Nickel plated</i>					

1.2200-27 Based On 28 Involute Spline

5.9060	1.5000	—	SR	500166-20	2-3-5981X
6.6300	1.5977	—	SR	500166-20	2-3-14061X
7.5000	1.4977	—	SR	500166-20	2-3-12141X
7.8600	1.4977	—	SR	500166-20	2-3-13691X

1.2840-29 Based On 30 Involute Spline

8.0300	1.6805	—	SR	500166-22	2-3-13651X
8.0300	1.6805	1.4400	SR	500166-20	2-3-14031X
<i>Nickel plated</i>					
8.0300	1.6805	1.4400	SR	500166-22	2-3-14261X
9.0000	1.6805	—	SR	500166-20	2-3-14221X
<i>W/vibration dampener</i>					
9.0000	1.6805	—	SR	500166-20	2-3-14211X
9.0000	1.6800	—	SR	500166-22	2-3-12621X
<i>W/vibration dampener</i>					
9.0000	1.6800	—	SR	500166-22	2-3-12611X
<i>Nickel plated</i>					
9.3300	1.6810	—	SR	500166-22	2-3-15841X

1.3260-29 Based On 30 Involute Spline

8.0300	1.6805	1.4400	SR	500166-22	2-3-14661X
<i>Nickel plated</i>					

1.3770-30 Based On 32 Involute Spline

6.1020	1.7310	1.3750	SR	500166-22	2-3-16011X
<i>includes boot can</i>					

1.3780-31 Based On 32 Involute Spline

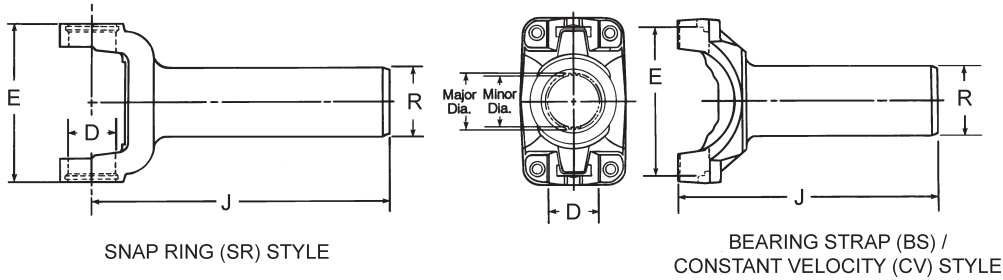
6.1250	1.7030	—	SR	500166-22	2-3-15371X
<i>W/vibration dampener</i>					
6.7600	1.8855	—	SR	500166-22	2-3-10831X
6.7600	1.8855	—	SR	500166-24	2-3-13811X
6.7600	1.8855	—	SR	2-68-143	2-3-12191X
7.2500	1.8855	—	SR	500166-22	2-3-14241X
<i>Nickel plated</i>					
7.2520	1.8855	—	SR	5001593	5001594
7.7200	1.8855	—	SR	500166-24	2-3-13881X
7.7200	1.8855	—	SR	500166-24	2-3-14831X
<i>Nickel plated</i>					
7.9400	1.8855	1.4100	SR	500166-24	2-3-10791X
8.6400	1.8555	—	SR	500166-24	2-3-14281X
<i>Nickel plated</i>					

1.3900-30 Based On 31 Involute Spline

6.0000	1.6880	—	SR	500166-22	2-3-6041X
7.0000	1.8855	—	SR	500166-22	2-3-10201X
7.4600	1.8858	—	CV	500166-22	2-3-12161X
<i>C. V. yoke</i>					



Slip Yoke Assemblies For Transmission Applications



J C/L to End of Spline	R Ground Hub Diameter	Counterbore Diameter	Style	Slip Yoke Plug Number	Slip Yoke Assembly Part Number
1330 SERIES (Continued) SR: E-3.875 OTHERS E-3.625, D-1.062 USE KIT 5-213X,5-790X,5-812X					
1.3900-30 Based On 31 Involute Spline (Continued)					
7.4600	1.8860	—	CV	500166-22	2-3-12961X <i>C.V. Yoke-Nickel Plated</i>
1.4060-32 Based On 34 Involute Spline					
8.4650	1.7710	1.4380	SR	500166-22	2-3-15891X
1350 SERIES E-3.875 D-1.188 USE KIT 5-178X OR 5-799X					
1.1760-26 Based On 27 Involute Spline					
6.4170	1.5030	1.2320	SR	500166-20	2-3-15751X
6.9400	1.5025	1.2180	SR	500166-20	3-3-3721X
6.9400	1.5025	1.2180	SR	2-68-23	3-3-4281X
1.3260-29 Based On 30 Involute Spline					
6.6300	1.6805	—	SR	500166-22	3-3-3931X
1.3750-31 Based On 32 Involute Spline					
6.9380	1.8860	—	SR	3-68-33	3-3-6481X <i>1/8" hole in welch plug</i>
6.9400	1.8860	—	SR	500166-24	3-3-6361X
1.3780-30 Based On 32 Involute Spline					
6.1020	1.7300	1.3750	SR	500166-22	3-3-7091X <i>.393" Counterbore Depth</i>
1.3780-31 Based On 32 Involute Spline					
5.5000	1.8855	—	SR	500166-24	3-3-2431X
6.9380	1.8860	—	SR	500166-24	3-3-5571X
6.9380	1.8860	—	SR	3-68-33	3-3-4261X
6.9400	1.8855	—	SR	3-68-23	3-3-6471X
7.7200	1.8860	—	SR	500166-24	3-3-6441X
7.7200	1.8855	—	SR	500166-24	3-3-6871X <i>Nickel plated</i>
7.9400	1.8860	1.4300	SR	500166-24	3-3-5551X
1.3900-30 Based On 31 Involute Spline					
6.4400	1.6855	—	SR	500166-22	3-3-2491X
6.5700	1.6842	—	SR	500166-22	3-3-5961X
7.3100	1.8857	—	SR	500166-23	3-3-5431X
7.4600	1.8857	—	CV	500166-22	3-3-4531X <i>C.V. yoke</i>
7.4600	1.8857	—	CV	500166-22	3-3-5861X <i>C.V. Yoke-Nickel Plated</i>
1.4030-21 Involute Spline					
5.3100	1.8300	—	SR	500166-24	3-3-848X <i>Hub dia. not ground</i>

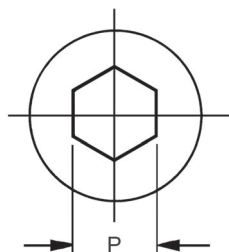
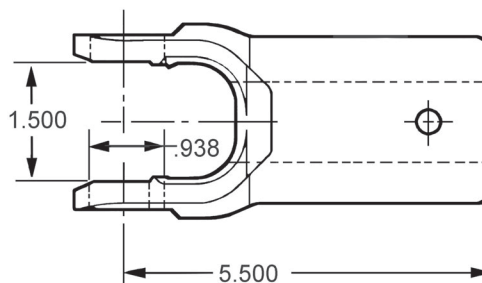


Slip Yoke Assemblies For Transmission Applications

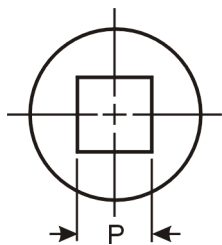
J	R	Counterbore Diameter	Style	Slip Yoke Plug Number	Slip Yoke Assembly Part Number
C/L to End of Spline	Ground Hub Diameter				
1410 SERIES		E-4.438	D-1.188	USE KIT 5-160X OR 5-801X	
1.2840-29 Based On 30 Involute Spline					
8.3400	1.6805	—	SR	500166-22	3-3-6121X <i>Nickel plated</i>
8.3400	1.6805	1.4400	SR	500166-22	3-3-5691X <i>W/vibration dampener</i>
8.3400	1.6805	1.4400	SR	500166-22	3-3-4851X <i>Nickel plated</i>
8.3400	1.6805	1.4400	SR	500166-22	3-3-4181X
8.3440	1.6880	—	SR	500166-22	3-3-6131X <i>Nickel plated yoke w/vibration dampener</i>
1.3260-29 Based On 30 Involute Spline					
8.3400	1.6805	1.4400	SR	500166-22	3-3-3251X
8.3400	1.6805	1.4400	SR	500166-22	3-3-3271X <i>Nickel plated</i>
1.3780-31 Based On 32 Involute spline					
6.9400	1.8850	—	SR	500166-24	3-3-6811X
6.9400	1.8855	—	SR	500166-24	3-3-6321X
7.7500	1.8855	—	SR	500166-22	3-3-3891X <i>Nickel plated</i>
7.7500	1.8855	—	SR	500166-22	3-3-3811X
8.0700	1.8855	—	SR	500166-24	5001646 <i>Nickel plated</i>
8.0700	1.8855	1.8860	SR	500166-24	3-3-6421X
8.7500	1.8855	—	SR	500166-22	3-3-4401X
8.7500	1.8860	—	SR	500166-22	3-3-4211X <i>W/vibration dampener</i>
1.3900-30 Based On 31 Involute Spline					
6.6500	1.8857	—	SR	500166-22	3-3-5981X
8.1100	1.8857	—	SR	500166-22	3-3-6661X
1.5510-33 Based On 34 Involute Spline					
8.1100	2.0860	—	SR	500166-26	3-3-7041X <i>Nickel plated</i>
1.6150-30 Based On 31 Involute Spline					
7.7500	2.2005	—	SR	500166-28	3-3-5631X
8.3400	2.2005	—	SR	500166-28	3-3-4391X
8.3400	2.0005	1.6550	SR	500166-28	3-3-6541X
8.3440	2.2010	—	SR	500166-28	3-3-3441X
8.3440	2.2030	—	SR	500166-28	3-3-4131X
8.3440	2.2010	—	SR	500166-28	3-3-4391X with vibration dampener 3-3-6141X <i>W/vibration dampener</i>
1.6160-30 Based On 31 Involute Spline					
7.7500	2.2005	—	SR	500166-28	3-3-5611X <i>Nickel plated</i>
1480 SERIES		E-4.438	D-1.375	USE KIT 5-188X OR 5-803X	
1.3900-30 Based On 31 Involute Spline					
6.8700	1.8857	—	SR	500166-23	3-3-6021X
1.6540-20 Involute Spline					
4.5600	2.3800	—	SR	500166-26	3-3-3151X <i>Hub dia. not ground</i>
1550 SERIES		E-5.250	D-1.375	USE KIT 5-155X OR 5-808X	
1.8750-14 Involute Spline					
4.2030	3.0000	—	SR	500166-31	4-3-1961X
4.7030	2.7500	—	SR	500166-31	4-3-1951X
2.3720-46 Involute Spline					
4.8800	3.1250	—	SR	500166-46	4-3-2441X <i>Includes flinger</i>



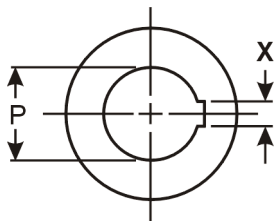
Slip Yoke Assemblies Hex, Square and Round Hole



P Hex Across Flats	Lube Fitting Part Number	Slip Yoke Assembly Number
1000 SERIES		USE KIT 5-170X
.8750	500174-1	10-3-162X
1.1250	500174-1	10-3-32X

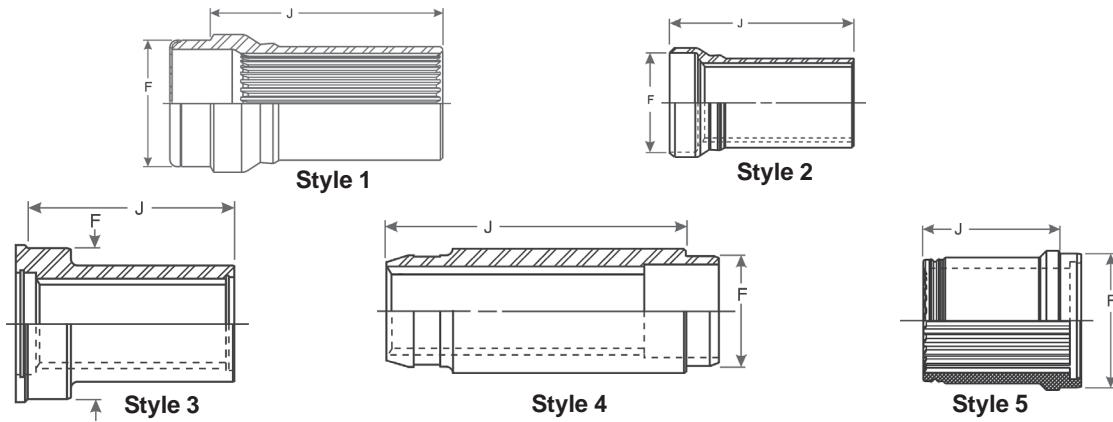


P Square Hole Across Flats	Lube Fitting Part Number	Slip Yoke Assembly Number
1000 SERIES		USE KIT 5-170X
.7500	500174-1	10-3-12X
.8750	500174-1	10-3-22X
1.0000	500174-1	10-3-122X



P Round Hole Diameter	X SAE Keyway Width	Lube Fitting Part Number	Slip Yoke Assembly Number
1000 SERIES		USE KIT 5-170X	
.7500	.1880	500174-1	10-3-13X
.8120	.2500	500174-1	10-3-23X
.8750	.2500	500174-1	10-3-33X
1.0000	.2500	500174-1	10-3-83X
1.1250	.3120	500174-1	10-3-183X
1.2500	.3120	500174-1	10-3-163X





J End of Spline to Weld	Style	Fits Tube Part Number	Mates w/ Part Number	F Butt Diameter	Splined Sleeve Detail	Slinger Part Number	Slip Yoke Assembly Part Number
SPL140 SERIES							
3.0710-30 Involute Spline							
6.7130	1	100-30-3	140-82-21X	3.9370	140-55-11	232755	140-55-21X
SPL170 SERIES							
3.4650-34 Involute Spline							
7.2050	2	170-28-37	170-82-131X	4.3460	170-55-81		170-55-81 <i>Sleeve Only-No Assembly</i>
7.9720	1	110-30-5	170-82-61X	4.3500	170-55-11-2	232700	170-55-21-2X
7.9840	2	170-28-37	170-82-71X	4.3460	170-55-51-1		170-3-11X
							<i>Includes Tube Yoke 170-28-37</i>
7.9840	2	170-28-37	170-82-71X	4.3460	170-55-51-1		170-55-51-1
8.7710	2	170-28-37	170-82-71X	4.3460	170-55-51-2		170-3-21X
							<i>Includes Tube Yoke 170-28-37</i>
8.7710	2	170-28-37	170-82-71X	4.3460	170-55-51-2		170-55-51-2
9.1530	1	110-30-5	170-82-61X	4.3500	170-55-11-1	232700	170-55-21-1X
9.5590	2	170-28-37	170-82-71X	4.3460	170-55-51-3		170-3-31X
							<i>Includes Tube Yoke 170-28-37</i>
9.5590	2	170-28-37	170-82-71X	4.3460	170-55-51-3		170-55-51-3
10.3460	2	170-28-37	170-82-71X	4.3460	170-55-51-4		170-3-41X
							<i>Includes Tube Yoke 170-28-37</i>
10.3460	2	170-28-37	170-82-71X	4.3460	170-55-51-4		170-55-51-4
SPL250 SERIES							
3.8580-38 Involute Spline							
6.9090	1	120-30-*		4.7440	250-55-21	232696	250-55-31X <i>Fits all 120-30 tubes</i>
1310 SERIES							
1.2500-16 Spline							
4.2500	4	14-30-62	2-82-1641	1.5700	2-55-523		2-55-533X
1.3750-16 Spline							
5.0300	4	2-28-3707X	211256X	—	2-55-51		2-55-51
3.0020-22 Based On 23 Involute Spline							
3.5800	5	32-38-12	2-82-1901X	3.8540	2-55-141	6.5-68-64	2-55-258X <i>Material: Aluminum</i>
3.9100	5	32-38-12	2-82-1971X	3.8540	2-55-181	6.5-68-64	2-55-268X <i>Material: Aluminum</i>
3.0020-23 Involute Spline							
4.9100	5	5001726	2-82-1901X	3.8170	5002371	6.5-68-64	5002372 <i>Material: Aluminum</i>
1410 SERIES							
1.7500-16 Spline							
4.4100	3	211140X-	3-82-781	2.5940	3-55-33	4-68-143	3-55-38X
1550 SERIES							
2.0000-16 Spline							
4.5600	3	210833X-	4-82-211	3.3200	4-55-43	4-68-43	4-55-48X
1710 SERIES							
2.5000-16 Spline							
5.7200	3	211110X-	6-82-1131-2	5.0200	6-55-43	6.5-68-13	6-55-38X



1-3-18KX 3	2-3-10871X 5	2-3-14241X 13	2-3-6041X 13
1-3-88KX 3	2-3-11071X 11	2-3-14261X 13	2-3-6061KX 5
10-3-121KX 3	2-3-11351X 4	2-3-14281X 13	2-3-6081X 11
10-3-122X 16	2-3-11731X 11	2-3-14311X 12	2-3-7171KX 5
10-3-12X 16	2-3-11781X 12	2-3-14331X 5	2-3-7481X 5
10-3-131X 3	2-3-11991X 5	2-3-14571X 12	2-3-7501X 11
10-3-13X 16	2-3-12031KX 5	2-3-1461KX 4	2-3-7661KX 4
10-3-162X 16	2-3-12051X 13	2-3-14661X 13	2-3-7681KX 5
10-3-163X 16	2-3-12081X 13	2-3-14771X 11	2-3-7691KX 5
10-3-183X 16	2-3-12141X 13	2-3-14791X 12	2-3-7961KX 5
10-3-18KX 3	2-3-12161X 13	2-3-14831X 13	2-3-7981KX 4
10-3-22X 16	2-3-12191X 13	2-3-14861X 11	2-3-8001KX 4
10-3-23X 16	2-3-12301KX 4	2-3-14871X 11	2-3-8021KX 5
10-3-291KX 3	2-3-12361X 13	2-3-14981X 12	2-3-8041KX 5
10-3-32X 16	2-3-12371X 13	2-3-15051X 12	2-3-8111KX 5
10-3-33X 16	2-3-12411X 11	2-3-15101X 4	2-3-8251X 12
10-3-51X 3	2-3-12421X 4	2-3-15321X 11	2-3-8311X 5
10-3-81X 3	2-3-12461X 12	2-3-15341X 13	2-3-8431X 11
10-3-83X 16	2-3-12611X 13	2-3-15351X 13	2-3-8481X 5
100-3-41X 3	2-3-12621X 13	2-3-15371X 13	2-3-8731X 11
140-55-21X 17	2-3-12671X 12	2-3-15391X 13	2-3-8741X 5
170-3-11X 17	2-3-12881X 4	2-3-15461X 12	2-3-8811X 3
170-3-21X 17	2-3-128KX 4	2-3-15631X 12	2-3-8841KX 4
170-3-31X 17	2-3-12961X 14	2-3-15711X 5	2-3-8861X 4
170-3-41X 17	2-3-12981X 12	2-3-15721X 13	2-3-8891X 11
170-55-21-1X 17	2-3-13051X 11	2-3-15751X 14	2-3-8921X 5
170-55-21-2X 17	2-3-13131X 12	2-3-15841X 13	2-3-8941KX 5
170-55-51-1 17	2-3-13221X 5	2-3-15891X 14	2-3-8961X 4
170-55-51-2 17	2-3-13311X 12	2-3-16011X 13	2-3-9191X 11
170-55-51-3 17	2-3-1331X 11	2-3-16061X 13	2-3-9211X 11
170-55-51-4 17	2-3-13351X 11	2-3-16161X 12	2-3-9371X 5
170-55-81 17	2-3-13461X 11	2-3-1781KX 4	2-3-9701X 11
2-3-10071X 11	2-3-13551X 12	2-3-178KX 4	2-3-9761X 12
2-3-10131X 12	2-3-13571X 5	2-3-1931KX 4	2-3-9781X 11
2-3-10201X 13	2-3-13651X 13	2-3-198KX 4	2-3-9811X 12
2-3-10261KX 5	2-3-13671X 13	2-3-258KX 4	2-3-9991X 3
2-3-10391X 11	2-3-13691X 13	2-3-348KX 4	250-55-31X 17
2-3-10411X 4	2-3-13721X 12	2-3-388X 12	2-55-258X 17
2-3-10431X 12	2-3-13811X 13	2-3-3951KX 4	2-55-268X 17
2-3-10501X 11	2-3-13831X 5	2-3-4071KX 4	2-55-51 17
2-3-10521X 4	2-3-13881X 13	2-3-4441KX 4	2-55-533X 17
2-3-10571KX 5	2-3-13891X 11	2-3-4681KX 5	3-3-118KX 7
2-3-10571X 5	2-3-14001X 12	2-3-4871X 12	3-3-1421KX 6
2-3-10621KX 4	2-3-14031X 13	2-3-4911X 11	3-3-1481KX 7
2-3-10641KX 5	2-3-14061X 13	2-3-4951KX 4	3-3-1501KX 6
2-3-10661X 4	2-3-14171X 13	2-3-4951X 4	3-3-1511KX 7
2-3-10761X 12	2-3-14191X 13	2-3-5221X 5	3-3-1561KX 6
2-3-10791X 13	2-3-14211X 13	2-3-5281X 12	3-3-1601KX 7
2-3-10801X 5	2-3-1421KX 4	2-3-5821X 5	3-3-1621KX 8
2-3-10831X 13	2-3-14221X 13	2-3-5981X 13	3-3-1641KX 7

3-3-1701KX 7	3-3-5481KX 7	4-3-1751KX 8	6-3-2721X 9
3-3-1831KX 7	3-3-5491X 7	4-3-1921KX 8	6-3-2741KX 9
3-3-2041KX 7	3-3-5551X 14	4-3-1951X 15	6-3-2761KX 9
3-3-2431X 14	3-3-5571X 14	4-3-1961X 15	6-3-2801KX 9
3-3-2471KX 6	3-3-5611X 15	4-3-2041KX 8	6-3-3151KX 9
3-3-2491X 14	3-3-5631X 15	4-3-2121KX 8	6-3-3171KX 9
3-3-2591KX 6	3-3-5691X 15	4-3-2141KX 8	6-3-3441KX 10
3-3-2681KX 6	3-3-5861X 14	4-3-2331X 8	6-3-3441X 10
3-3-2701KX 6	3-3-5921KX 6	4-3-2441X 15	6-3-3461KX 10
3-3-2801KX 6	3-3-5961X 14	4-55-48X 17	6-3-3481KX 9
3-3-2931KX 6	3-3-5981X 15	5001594 13	6-3-3501KX 10
3-3-3001X 6	3-3-598KX 6	5001646 15	6-3-3521KX 9
3-3-3121X 8	3-3-6021X 15	5002372 17	6-3-3541KX 9
3-3-3151X 15	3-3-6041X 7	5-2-3231X 9	6-3-3611KXM 9
3-3-3251X 15	3-3-6061X 7	5-3-108KX 9	6-55-38X 17
3-3-3271X 15	3-3-6121X 15	5-3-128KX 9	6C-3-21X 10
3-3-3441X 15	3-3-6131X 15	5-3-1411KX 9	70-3-21X 3
3-3-3601X 6	3-3-6141X 15	5-3-1571KX 9	70-3-41X 3
3-3-3721X 14	3-3-6201X 6	5-3-168KX 9	8-3-391KX 10
3-3-3791X 7	3-3-6321X 15	5-3-1711KX 9	8-3-411KX 10
3-3-3811X 15	3-3-6341X 7	5-3-1861KX 9	8-3-431KX 10
3-3-3871KX 7	3-3-6361X 14	5-3-198KX 9	90-3-21X 3
3-3-388KX 6	3-3-6381X 6	5-3-2261KX 9	90-3-41X 3
3-3-3891X 15	3-3-6421X 15	5-3-288KX 9	
3-3-3931X 14	3-3-6441X 14	5-3-3101KXM 9	
3-3-398KX 6	3-3-6471X 14	5-3-3121KX 9	
3-3-4131X 15	3-3-6481X 14	5-3-3321KX 9	
3-3-4181X 15	3-3-6541X 15	5-3-368KX 9	
3-3-4211X 15	3-3-6611X 7	5-3-398X 9	
3-3-4261X 14	3-3-6641X 7	5-3-458X 9	
3-3-4281X 14	3-3-6661X 15	5-3-488KX 9	
3-3-4391X 15	3-3-6701X 7	55-3-21X 11	
3-3-4401X 15	3-3-6791X 7	55-3-61X 3	
3-3-4421X 7	3-3-6811X 15	55-3-81X 3	
3-3-4531X 14	3-3-6871X 14	5C-3-21X 10	
3-3-4551X 7	3-3-6981X 6	6.3-3-21KX 10	
3-3-4651X 6	3-3-7001X 7	6.3-3-41KX 10	
3-3-468KX 7	3-3-7041X 15	6.5-3-1351KX 10	
3-3-4781X 6	3-3-7091X 14	6.5-3-1371KX 10	
3-3-4851X 15	3-3-748KX 7	6.5-3-1371X 10	
3-3-4871X 7	3-3-758KX 6	6.5-3-1431KX 10	
3-3-488KX 6	3-3-768KX 7	6.5-3-1451KX 10	
3-3-4991KX 6	3-3-788KX 7	6.5-3-1571KX 10	
3-3-508KX 7	3-3-798KX 7	6.5-3-1741X 10	
3-3-5141X 7	3-3-848X 14	6-3-1481KX 10	
3-3-5181KX 6	3-55-38X 17	6-3-1601KX 10	
3-3-5191X 7	4-3-1241KX 8	6-3-1661KX 10	
3-3-5411KX 7	4-3-1261KX 8	6-3-2631KX 9	
3-3-5431X 14	4-3-1411KX 8	6-3-2651KX 9	
3-3-5461X 6	4-3-1431KX 8	6-3-2671KX 9	



Dana Corporation
Heavy Vehicle Technologies and
Systems Service
PO Box 321
Toledo, Ohio 43697-0321
1-800-SAY-DANA (729-3262)
www.dana.com
www2.dana.com/expert

Dana Corporation
Heavy Vehicle Technologies and
Systems Service - Canada
5095 South Service Road
Beamsville, Ontario LOR 1B0
Tech Service: (905) 563-4991

Dana Corporation
Heavy Vehicle Technologies and
Systems Service - International
(419) 861-6325

